



By Appointment to HRH The Prince of Wales  
Suppliers of Wild Flower and Grass Seeds  
Emorsgate Seeds, Bath

# Emorsgate Seeds

COMPLETELY WILD SINCE 1980



2024



By Appointment to  
HRH The Prince of Wales



# Emorsgate Seeds

COMPLETELY WILD SINCE 1980

## INFORMATION

|                                  |      |
|----------------------------------|------|
| Method for Sowing Species        | 4    |
| Sowing Yellow Rattle             | 5    |
| Growing wild Orchids             | 6    |
| Sowing and Aftercare of Mixtures | 7-10 |
| Mixtures and Sowing Rates        | 11   |
| Brush Harvesting Services        | 12   |

## MIXTURES

|                                    |       |
|------------------------------------|-------|
| General-purpose Meadow Mixtures    | 12-14 |
| Meadow Mixtures for Specific Soils | 15-21 |
| Brush Harvested Meadow Mixtures    | 22-24 |
| Special Purpose Mixtures           | 25-27 |
| Cornfield Annuals                  | 28    |

## SEED PRICES

|  |       |
|--|-------|
| Mixture Prices                             | 29-30 |
| Wild Flower Species                        | 31-39 |
| Wild Grasses, Sedges and Rushes            | 40-41 |
| Amenity Grasses and Agricultural Cultivars | 42-43 |

### MANOR FARM

Langridge  
Bath  
BA1 8AJ

### NEEPS BRIDGE FARM

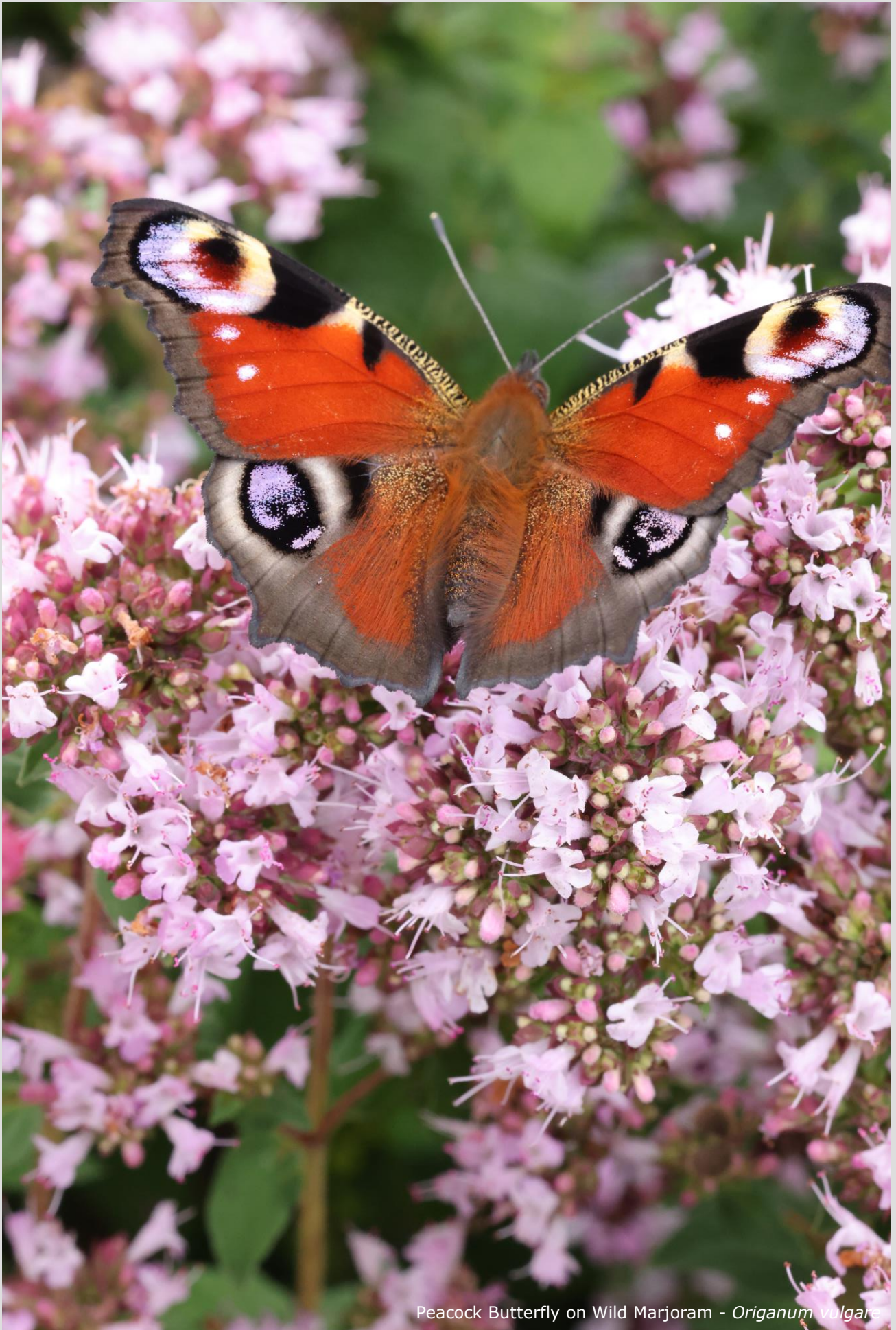
Middle Drove  
Nr Wisbech  
PE14 8JT

[www.emorsgateseeds.com](http://www.emorsgateseeds.com)    [enquiries@emorsgateseeds.com](mailto:enquiries@emorsgateseeds.com)

Call: 01553 829028 Monday – Friday 9.00am – 4.00pm

Orders taken online, by phone or email

Our website gives up to date information on the availability, specification and price of our full range of species and mixtures. The availability of species will vary through the year, with most species available in good quantities in the autumn, just after harvest and cleaning. Most mixtures are usually available throughout the year, but the composition of these mixtures will change to suit the season and the availability of species following harvest. Please keep an eye on our website. Although prices may occasionally change, we do try to keep them constant for the calendar year.



Peacock Butterfly on Wild Marjoram - *Origanum vulgare*

## SEED DORMANCY and GERMINATION

The germination requirements of most wild seeds are that the seed should be fully imbibed (wet), exposed to moderate temperatures (10-25°C), exposed to light, and the seed should be non-dormant. Dormancy is a property of a proportion of the seeds of some species that helps to reduce germination at an inclement time of year, or under the wrong conditions, and helps to prevent all seeds germinating at once. There are three main types of seed dormancy:

*TEMPERATURE:* The seeds of some species require exposure to a period of low temperature (while fully imbibed) to break dormancy. This process, termed vernalisation, is a requirement in many species that normally have spring germinating seeds, e.g. Primula species, Yellow Rattle and Betony.

*SEED COAT:* Some species have seeds with a hard seed coat. In these species the seed coat must be degraded by abrasion or decay sufficient to allow the seed to imbibe water. This requirement, termed scarification, is found in Geraniums, Legumes and some other species.

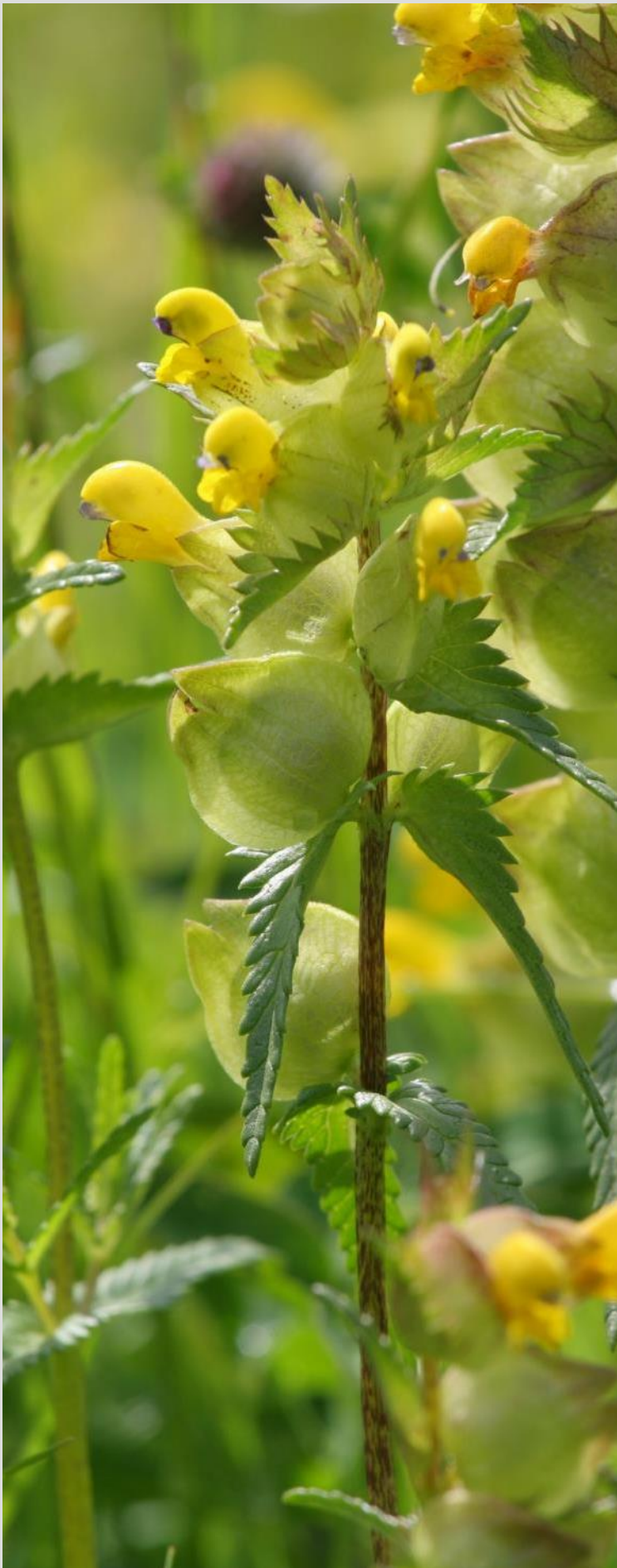
*TIME:* There are a variety of other mechanisms that ensure that seeds of a species do not all germinate at once. These seeds will often exhibit complex time and environment related patterns of germination.

## SOWING SPECIES UNDER GLASS

Autumn and spring are good times to sow under glass, in a polythene tunnel, or in a conservatory, although seeds requiring vernalisation are best sown in the autumn. Fill a seed tray to  $\frac{3}{4}$  deep with peat-free seed sowing compost, firm and water well. Sprinkle seeds on the surface at 100-500 seeds per tray and add a light covering of horticultural grit. Do not bury the seeds. Cover the tray with a sheet of glass and place in an unheated position, out of direct sunlight. Remove the glass at the first sign of germination. From an autumn sowing this will normally be in February or March. Place the tray on a bench, watering as required. Prick out the seedlings into potting compost as soon as they can be handled, holding only by the cotyledon. Grow on under glass, harden off outside, and plant out as soon as the conditions are suitable.

## SOWING SPECIES OUTSIDE

Spring and autumn are the best times to sow outside. Prepare a weed free seed bed with a medium/fine firm tilth. Sow the seeds on the surface in patches (1000-4000 seeds/m<sup>2</sup>), or in rows (100-500 seeds/m). Firm the surface to give good seed/soil contact, but do not cover the seeds. Germination will occur over a period of time depending on the species, conditions and sowing date.



Yellow Rattle is an attractive annual of hay meadows. It is partially parasitic on some other grassland species and will often reduce the vigour of adjacent coarse grasses, resulting in transient dominance of Yellow Rattle in patches across a field. Each patch triggers a succession, allowing other sown species to establish in the vacant niches left by Yellow Rattle.

Broadcast Yellow Rattle seed in the autumn onto existing scarified grassland at up to 0.5g/m<sup>2</sup>. The seed requires vernalisation to break dormancy, and will germinate in February or March of the following year. The plants flower in June and die after shedding seed in July.

Yellow Rattle can reduce the productivity of grassland, and its presence will increase and maintain species diversity of a meadow.



Orchids have dust like seed that can survive perhaps 5 years or so while dormant in the soil, but, on germination, the seedlings must form a close, within-cell, association with specific soil fungi. This symbiotic relationship continues below ground for 2-3 years, and then also as the young plant emerges above ground, through to flowering, perhaps 6-10 years after germination.

There is no easy way of knowing if your site can provide the right conditions for Orchids. The required fungus is, however, very common. Also, it appears that grassland Orchids establish and grow best in short, open, flower rich swards on poor soils.

Sprinkle the seed finely over the surface of your chosen spot. Allow rain to wash the seed down through the vegetation and into the soil, and manage consistently from year to year with a mid-summer cut. When flowering occurs, perhaps after 6-10 years, continue with the midsummer cut to allow seed set and dispersal.

Our Orchid seed is sold mixed with dry sieved soil taken from our Orchid plots. This aids handling and assists in providing the mycorrhizal fungi required by Orchids. The proportion used is 1 part seed to 99 parts soil. Each gram of mixture will contain an estimated 10,000 seeds.



Common Spotted-orchid, *Dactylorhiza fuchsii*

## MEADOW CREATION BY SOWING ONTO PREPARED SOIL

**Ground Preparation:** Select ground that is not highly fertile and does not have a problem with perennial weeds. Remove any existing vegetation by repeated cultivation or turf stripping. Then plough, surface cultivate or dig to bring up clean soil, harrow or rake to produce a medium tilth, and roll or tread to produce a firm surface. Aim to produce a firm, weed free, medium tilth, seedbed.

**Sowing rate:** Sow at 4g/m<sup>2</sup> in a landscaping or garden setting. A reduced rate of around 2g/m<sup>2</sup> may be used in an agricultural setting or on large areas.

**Sowing:** Sow in the autumn or the spring, or at any other time of the year if the ground conditions are good. Divide the quantity of seed and sow half in one direction over the entire area and the remainder at 90°. The seed must be sown on the surface and can be applied by seed drill, seed fiddle, or broadcast by hand. Do not incorporate or cover the seed, but firm in with a roll, or by treading, to give good seed/soil contact.

**Aftercare:** Most of the sown meadow species are perennial and are slow to establish. Soon after sowing there will be a flush of annual weeds, arising from the soil seed bank. These weeds can look unsightly, but they will offer shelter to the sown seedlings, are great for bugs, and they will die before the year is out. So resist cutting the annual weeds until mid to late summer, especially if the mixture contains Yellow Rattle, or has been sown with a nurse of cornfield annuals. Then cut, remove and compost. This will reveal the young meadow, which can then be kept short by grazing or mowing through to the end of March of the following year.

In the second growing season, and each year thereafter, leave the meadow uncut and un-grazed from the end of March to mid summer, allowing the sown species to flower in June and July. After flowering, cut and remove the vegetation. This may be taken off as hay or cut and stacked nearby to rot. The meadow may then be kept mown or grazed through to the end of March in the following year. Moderate winter poaching is beneficial. Flowering in the second growing season will be very good, and as the years go by, and with good management, species diversity will increase.

Cutting date can be varied from year to year, bringing it forward to early July if the meadow becomes rank, or taking a later cut in August if the structure is good. Perennial weeds can be controlled by selective scything or topping. Cut perennial weeds at flowering and before seed set.

## MEADOW RESTORATION BY SOWING INTO EXISTING GRASS

Meadow restoration is a no-plough method for diversifying existing established grassland. However, restoration is more challenging than creation, and success depends upon, (1) a good site, (2) very hard scarification, (3) autumn sowing and (4) Yellow Rattle.

Select grassland with a good wild grass content (but otherwise species poor) on poor to moderately fertile soil. Avoid ground infested with Docks, Thistles or Nettles. Prepare in late summer by cutting low and/or grazing very hard. Then scarify hard with harrows or by raking, aiming to create around 50% bare soil. This is best done when the ground is dry. Sow on the surface in the autumn (September is the best month) using a complete meadow mixture at 4g/m<sup>2</sup>, following the method given above. Then roll hard to firm back the soil and give good seed/soil contact. Continue cutting or grazing after sowing the seed, and until the end of March in the following year. From then on manage as a meadow, leaving it uncut each year till mid summer.

Yellow Rattle at up to 0.5g/m<sup>2</sup>, if not already in the standard mixture, will help to suppress some of the existing coarse grasses and assist in the establishment of the sown species.

## SOWING YELLOW RATTLE INTO EXISTING GRASS

**Ground preparation:** Yellow Rattle is a partial parasitic annual of other plant species. Its hosts include Perennial Ryegrass and Yorkshire Fog. Sowing Yellow Rattle can reduce the productivity of grassland, reduce competition from existing grasses and increase species diversity. However, establishment can be tricky. Prepare for sowing by cutting or grazing very hard in mid summer. Then scarify hard with harrows or by raking, aiming to create around 50% bare soil.

**Sowing:** Yellow Rattle seed has poor longevity in soil and a strict requirement for vernalisation. It will not germinate from a spring sowing. Therefore, sow fresh seed in late summer to early winter at up to 0.5g/m<sup>2</sup>. Yellow Rattle may be sown alone or combined with other species. Sow on the surface and roll in. Autumn and winter grazing will help to tread the seed in.

**Aftercare:** Germination usually occurs around February/March. Cease grazing or cutting at the end of March and manage as an established meadow. Under favourable conditions plant numbers can increase quickly, producing a flush of Yellow Rattle in years two or three. A flush is always followed by decline, and it is this decline that provides opportunities for other sown species.

Heavy grazing or cutting during the growing season will eliminate Yellow Rattle.

## SOWING SPECIAL PURPOSE MIXTURES

Ground preparation for these mixtures will be similar to that for meadow creation, taking into account the site and ground conditions. In many cases it will be necessary to create a weed free seedbed before sowing the seed. As with meadow mixtures, sow on the surface and firm in.

Tussock, Pond, Woodland, Hedgerow, and Pollinator mixes should be left uncut throughout the year and from year to year, or can be lightly grazed. However, occasional selective scything and topping may be needed to control scrub or patches of weed.

## SOWING CORNFIELD ANNUALS

**Ground preparation:** Cultivate the soil to create a weed free seedbed with a medium to fine firm tilth, following the method described for meadow creation.

**Sowing rate:** Sow cornfield mixtures at 2g/m<sup>2</sup>. If sown as a nurse for a meadow then sow both mixes together at a combined rate of 6g/m<sup>2</sup>.

**Sowing:** If the Cornfield Annuals are being sown alone then sow in the autumn, winter or early spring. A later sowing will shift flowering beyond the normal peak in June. If sowing as a nurse for a meadow mixture then combine the two mixtures and sow in the autumn, winter or early spring. Sow on the surface and roll in.

**Aftercare:** Cornfield Annuals sown alone should be allowed to grow, flower and shed seed, then in late summer the area can be cut and cultivated. An annual cultivation is essential for re-establishment from self-sown seed.

If the cornfield annuals have been sown as a nurse for a meadow mixture then cut after flowering in mid summer and remove the cuttings, but do not cultivate. The cornfield annuals will suppress annual weed growth in the first year and give shelter to the under-sown perennial meadow species. After cutting manage the area as an established meadow, allowing the meadow species to replace the cornfield annuals in year two and thereafter.



## GENERAL PURPOSE MEADOW MIXTURES, EM1-EM3

EM1, EM2 and EM3 are perennial mixtures for creating flower rich meadows on a wide range of soil types.

## MEADOW MIXTURES for SPECIFIC SOILS, EM4-EM10

These mixtures are designed specifically for different soil types, including clay, loams, sandy soils, calcareous soils and wetlands.

## BRUSH HARVESTED MEADOW MIXTURES, EM11-EM32

These are completely wild mixtures and have been brush harvested directly from high quality wild donor sites.

## SPECIAL PURPOSE MIXTURES, EP1, EH1 and EW1

This group includes mixtures for the wet conditions at pond edges, the shaded conditions below hedges, and woodland ground flora.

## CORNFIELD ANNUALS, EC1 and EC2

These wild cornfield annual mixtures produce a brilliant display of flowers in the first summer after sowing. Maintain from year to year by cultivating in the autumn.

## MIXTURE COMPOSITION

Most of our complete mixtures consist of 20% wild flower seed and 80% grass seed by weight. The exceptions are; EM1, which contains 10% wild flower seed, EM2, which contains 15% wild flower seed, and Cornfield Mixtures EC1 and EC2, which are 100% wild flower seed. Special mixtures can be created by selecting seeds from the species lists, and/or by combining a range of flower (only) and grass (only) mixtures in varying proportions. The species composition of our mixtures will change to suit the season and the availability of species. For example, Yellow Rattle will not germinate from a spring sowing. Please keep an eye on our website.

## SOWING RATES for MEADOW MIXTURES

The standard rate for sowing meadow mixtures in a garden, or a landscaping situation, is 4g/m<sup>2</sup>. This rate should not be exceeded, but may be reduced when sowing on farmland and over large areas. In such situations, and where conditions are good, 2g/m<sup>2</sup> is usually adequate. The rate may be reduced further to 1g/m<sup>2</sup>. This low rate creates an open structure, allowing for natural colonisation by other species. An application rate of 1g/m<sup>2</sup> equates to approximately 1,000 seeds/m<sup>2</sup>.

If resources are limited it is better to sow at a low rate on a larger area than at a standard rate on a small area. The standard rate gives quicker establishment of full ground cover, but after 10-20 years there may be little observable difference between sowing rates of 4g/m<sup>2</sup>, 2g/m<sup>2</sup> and 1g/m<sup>2</sup>.



MEADOW CREATION: 3m roller feed seed box mounted on 3m discs surface sowing a meadow mixture at  $2\text{g}/\text{m}^2$  onto the surface of prepared bare soil



MEADOW RESTORATION: 3m roller feed seed box mounted on 3m discs surface sowing a meadow mixture at  $2\text{g}/\text{m}^2$  onto the surface of scarified species poor grassland



## BRUSH HARVESTING METHOD

We designed and made the first meadow brush harvester in 1986. A world first, and that harvester is still going strong. Unlike suction harvesters and fan assisted brush harvesters, our brush harvesters are very kind to invertebrates. We have several 1.4m side-mounted brush harvesters, a loader mounted 2.0m brush harvester and a 3.0m trailed brush harvester. Typical yield of clean dry seed is  $\approx 10\text{-}40\text{kg/acre}$  and work rate is  $\approx 0.5\text{-}1.0$  acres/1.0m brush length/hour. Standing hay crops are not harmed.

Brush harvesting produces a completely wild, 100% natural, meadow mixture. With only 3% of wild meadows surviving in the British Isles, and these often as small, isolated fields, brush harvesting provides a method to enlarge and link these important sites without harming their scientific and heritage value.

## CONTRACT BRUSH HARVESTING COSTS

- Pre-harvest site visit,  $\approx \text{£}400.00$
- Brush harvesting,  $\approx \text{£}500.00/\text{acre}$
- Seed drying and cleaning,  $\approx \text{£}100.00/\text{acre}$
- Sample seed analysis,  $\approx \text{£}300.00/\text{sample}$
- Temperature and humidity controlled seed storage,  $\approx \text{£}12.00/\text{kg}/\text{year}$

## MEADOWS WANTED

We pay  $\text{£}100.00\text{-}200.00/\text{acre}$  for the option to brush harvest the very best species rich unimproved hay meadows.

Prices and costs will vary depending on site conditions and context.

### EM1: BASIC GENERAL PURPOSE MEADOW MIXTURE

This is a simple low-cost meadow mixture suitable for a wide range of soil types. The wild flowers are robust and showy, and the grasses are fine and slow growing. EM1 consists of 10% wild flowers and 90% meadow grasses.

#### **% Wild flowers (EM1F)**

- 0.3 *Achillea millefolium*, Yarrow
- 1.6 *Centaurea nigra*, Common Knapweed
- 0.5 *Daucus carota*, Wild Carrot
- 1.6 *Leucanthemum vulgare*, Oxeye Daisy
- 1.6 *Malva moschata*, Musk Mallow
- 1.6 *Plantago lanceolata*, Ribwort Plantain
- 1.6 *Poterium sanguisorba*, Salad Burnet
- 0.7 *Ranunculus acris*, Meadow Buttercup
- 0.5 *Rhinanthus minor*, Yellow Rattle

#### **% Meadow grasses (EG1)**

- 9.0 *Agrostis capillaris*, Common Bent
- 31.5 *Cynosurus cristatus*, Crested Dog's-tail
- 27.0 *Festuca rubra*, Red Fescue
- 4.5 *Phleum bertolonii*, Smaller Cat's-tail
- 18.0 *Poa pratensis*, Meadow-grass



## EM2: STANDARD GENERAL PURPOSE MEADOW MIXTURE

This meadow mixture contains a good range of species and is suitable for a wide variety of soil types. EM2 contains 15% wild flowers and 85% meadow grasses.

**% Wild flowers (EM2F)**

- 0.7 *Achillea millefolium*, Yarrow
- 0.3 *Agrimonia eupatoria*, Agrimony
- 2.0 *Centaurea nigra*, Common Knapweed
- 0.9 *Daucus carota*, Wild Carrot
- 1.5 *Galium verum*, Lady's Bedstraw
- 0.5 *Knautia arvensis*, Field Scabious
- 1.3 *Leucanthemum vulgare*, Oxeye Daisy
- 1.8 *Malva moschata*, Musk Mallow
- 1.8 *Plantago lanceolata*, Ribwort Plantain
- 0.9 *Poterium sanguisorba*, Salad Burnet
- 0.3 *Primula veris*, Cowslip
- 0.5 *Prunella vulgaris*, Selfheal
- 0.7 *Ranunculus acris*, Meadow Buttercup
- 1.5 *Rhinanthus minor*, Yellow Rattle
- 0.3 *Rumex acetosa*, Common Sorrel

**% Meadow grasses (EG1)**

- 8.5 *Agrostis capillaris*, Common Bent
- 29.8 *Cynosurus cristatus*, Crested Dog's-tail
- 25.5 *Festuca rubra*, Red Fescue
- 4.2 *Phleum bertolonii*, Smaller Cat's-tail
- 17.0 *Poa pratensis*, Meadow Grass



## EM3: SPECIAL GENERAL PURPOSE MEADOW MIXTURE

Meadow mixture EM3 contains a very wide range of species. It may be used to create a very diverse sward, or where conditions and soil type may vary across a site. EM3 consists of 20% wild flower seed and 80% meadow grasses.

|      |   |
|------|---|
| %    | <b>Wild flowers (EM3F)</b>                      |
| 0.3  | <i>Achillea millefolium</i> , Yarrow            |
| 0.5  | <i>Agrimonia eupatoria</i> , Agrimony           |
| 0.1  | <i>Anthyllis vulneraria</i> , Kidney Vetch      |
| 0.2  | <i>Betonica officinalis</i> , Betony            |
| 1.5  | <i>Centaurea nigra</i> , Common Knapweed        |
| 0.5  | <i>Centaurea scabiosa</i> , Greater Knapweed    |
| 1.0  | <i>Cruciata laevipes</i> , Crosswort            |
| 1.0  | <i>Daucus carota</i> , Wild Carrot              |
| 0.1  | <i>Echium vulgare</i> , Viper's-bugloss         |
| 0.5  | <i>Filipendula ulmaria</i> , Meadowsweet        |
| 0.5  | <i>Galium album</i> , Hedge Bedstraw            |
| 0.5  | <i>Galium verum</i> , Lady's Bedstraw           |
| 0.2  | <i>Geranium pratense</i> , Meadow Cranesbill    |
| 1.0  | <i>Knautia arvensis</i> , Field Scabious        |
| 0.2  | <i>Leontodon hispidus</i> , Rough Hawkbit       |
| 1.5  | <i>Leucanthemum vulgare</i> , Oxeye Daisy       |
| 0.1  | <i>Lotus corniculatus</i> , Bird's-foot Trefoil |
| 1.0  | <i>Malva moschata</i> , Musk Mallow             |
| 0.5  | <i>Medicago lupulina</i> , Black Medick         |
| 0.1  | <i>Origanum vulgare</i> , Wild Marjoram         |
| 0.4  | <i>Pastinaca sativa</i> , Wild Parsnip          |
| 1.5  | <i>Plantago lanceolata</i> , Ribwort Plantain   |
| 1.0  | <i>Poterium sanguisorba</i> , Salad Burnet      |
| 0.2  | <i>Primula veris</i> , Cowslip                  |
| 2.0  | <i>Prunella vulgaris</i> , Selfheal             |
| 1.5  | <i>Ranunculus acris</i> , Meadow Buttercup      |
| 0.2  | <i>Ranunculus bulbosus</i> , Bulbous Buttercup  |
| 1.0  | <i>Rhinanthus minor</i> , Yellow Rattle         |
| 0.2  | <i>Scabiosa columbaria</i> , Small Scabious     |
| 0.1  | <i>Silene dioica</i> , Red Campion              |
| 0.5  | <i>Silene vulgaris</i> , Bladder Campion        |
| 0.1  | <i>Onobrychis viciifolia</i> , Sainfoin         |
| %    | <b>Meadow grasses (EG1)</b>                     |
| 8.0  | <i>Agrostis capillaris</i> , Common Bent        |
| 28.0 | <i>Cynosurus cristatus</i> , Crested Dog's-tail |
| 24.0 | <i>Festuca rubra</i> , Red Fescue               |
| 4.0  | <i>Phleum bertolonii</i> , Smaller Cat's-tail   |
| 16.0 | <i>Poa pratensis</i> , Meadow Grass             |



EM4: MEADOW MIXTURE for CLAY SOILS

EM4 is a special mixture for clay soils, containing wild flowers and wild grasses that are well adapted to these conditions. Clay soils are composed of very fine particles and are sticky and heavy when wet, and very hard when dry. Therefore, they are difficult to work, and it is often best to autumn plough and allow winter frosts to create a tilth. Clay soils are usually moderately fertile and slightly acid to neutral in pH.

% **Wild flowers** (EM4F)

- 0.5 *Achillea millefolium*, Yarrow
- 0.5 *Agrimonia eupatoria*, Agrimony
- 0.5 *Betonica officinalis*, Betony
- 2.5 *Centaurea nigra*, Common Knapweed
- 0.2 *Filipendula ulmaria*, Meadowsweet
- 1.0 *Galium verum*, Lady's Bedstraw
- 0.5 *Geranium pratense*, Meadow Crane's-bill
- 2.0 *Lathyrus pratensis*, Meadow Vetchling
- 0.2 *Leontodon hispidus*, Rough Hawkbit
- 1.5 *Leucanthemum vulgare*, Oxeye Daisy
- 0.2 *Lotus corniculatus*, Bird's-foot Trefoil
- 1.0 *Malva moschata*, Musk Mallow
- 2.5 *Plantago lanceolata*, Ribwort Plantain
- 0.4 *Primula veris*, Cowslip
- 2.0 *Prunella vulgaris*, Selfheal
- 1.5 *Ranunculus acris*, Meadow Buttercup
- 0.5 *Ranunculus bulbosus*, Bulbous Buttercup
- 1.0 *Rhinanthus minor*, Yellow Rattle
- 0.5 *Rumex acetosa*, Common Sorrel
- 0.5 *Sanguisorba officinalis*, Great Burnet
- 0.5 *Vicia cracca*, Tufted Vetch

% **Meadow grasses** (EG4)

- 5.0 *Agrostis capillaris*, Common Bent
- 3.0 *Anthoxanthum odoratum*, Sweet Vernal-grass
- 3.0 *Briza media*, Quaking Grass
- 40.0 *Cynosurus cristatus*, Crested Dog's-tail
- 1.0 *Deschampsia cespitosa*, Tufted Hair-grass
- 20.0 *Festuca rubra*, Red Fescue
- 8.0 *Schedonorus arundinaceus*, Tall Fescue



EM5: MEADOW MIXTURE for LOAMY SOILS

EM5 is suitable for loamy soils and is based on MG5 grasslands, the flower rich meadows that were once widespread in lowland Britain, but are now very rare. EM5 is suitable for sowing onto poor to moderately fertile loam soils. Loam soils are easy to work, neutral in pH, and the typical soil of lowland Britain.

% **Wild flowers** (EM5F)

- 0.3 *Achillea millefolium*, Yarrow
- 0.5 *Agrimonia eupatoria*, Agrimony
- 0.5 *Betonica officinalis*, Betony
- 2.5 *Centaurea nigra*, Common Knapweed
- 0.5 *Daucus carota*, Wild carrot
- 0.5 *Galium verum*, Lady's Bedstraw
- 0.5 *Geranium pratense*, Meadow Cranesbill
- 1.0 *Knautia arvensis*, Field Scabious
- 0.5 *Lathyrus pratensis*, Meadow Vetchling
- 0.2 *Leontodon hispidus*, Rough Hawkbit
- 1.5 *Leucanthemum vulgare*, Oxeye Daisy
- 0.3 *Lotus corniculatus*, Bird's-foot Trefoil
- 1.0 *Malva moschata*, Musk Mallow
- 1.5 *Plantago lanceolata*, Ribwort Plantain
- 0.5 *Poterium sanguisorba*, Salad Burnet
- 0.5 *Primula veris*, Cowslip
- 2.0 *Prunella vulgaris*, Selfheal
- 2.0 *Ranunculus acris*, Meadow Buttercup
- 0.2 *Ranunculus bulbosus*, Bulbous Buttercup
- 2.0 *Rhinanthus minor*, Yellow Rattle
- 0.5 *Rumex acetosa*, Common Sorrel
- 0.5 *Silene vulgaris*, Bladder Champion
- 0.5 *Taraxacum officinale*, Dandelion

% **Meadow grasses** (EG5)

- 8.0 *Agrostis capillaris*, Common Bent
- 1.6 *Anthoxanthum odoratum*, Sweet Vernal-grass
- 3.2 *Briza media*, Quaking Grass
- 56.0 *Cynosurus cristatus*, Crested Dog's-tail
- 10.4 *Festuca rubra*, Red Fescue
- 0.8 *Trisetum flavescens*, Yellow Oat-grass





EM6: MEADOW MIXTURE for CHALK and LIMESTONE SOILS

This rich mixture is suitable for sowing onto thin lime-rich soils over chalk or limestone. Calcareous soils are high in pH, free draining, often nutrient poor, and can support some of the most diverse and interesting plant communities.

% **Wild flowers** (EM6F)

- 0.2 *Achillea millefolium*, Yarrow
- 0.5 *Agrimonia eupatoria*, Agrimony
- 0.2 *Anthyllis vulneraria*, Kidney Vetch
- 1.2 *Centaurea nigra*, Common Knapweed
- 2.0 *Centaurea scabiosa*, Greater Knapweed
- 1.0 *Daucus carota*, Wild Carrot
- 1.0 *Echium vulgare*, Viper's Bugloss
- 0.4 *Filipendula vulgaris*, Dropwort
- 0.5 *Galium album*, Hedge Bedstraw
- 0.5 *Galium verum*, Lady's Bedstraw
- 0.2 *Hippocrepis comosa*, Horseshoe Vetch
- 1.0 *Knautia arvensis*, Field Scabious
- 1.0 *Leucanthemum vulgare*, Oxeye Daisy
- 0.2 *Lotus corniculatus*, Bird's-foot Trefoil
- 0.5 *Malva moschata*, Musk Mallow
- 0.2 *Origanum vulgare*, Wild Marjoram
- 1.0 *Plantago lanceolata*, Ribwort Plantain
- 0.5 *Plantago media*, Hoary Plantain
- 2.0 *Poterium sanguisorba*, Salad Burnet
- 0.3 *Primula veris*, Cowslip
- 1.5 *Prunella vulgaris*, Selfheal
- 0.9 *Ranunculus bulbosus*, Bulbous Buttercup
- 1.0 *Rhinanthus minor*, Yellow Rattle
- 0.2 *Rumex acetosa*, Common Sorrel
- 1.0 *Scabiosa columbaria*, Small Scabious
- 1.0 *Silene vulgaris*, Bladder Campion

% **Meadow grasses** (EG6)

- 8.0 *Agrostis capillaris*, Common Bent
- 2.0 *Anthoxanthum odoratum*, Sweet Vernal-grass
- 6.0 *Briza media*, Quaking Grass
- 5.0 *Bromopsis erecta*, Upright Brome
- 30.4 *Cynosurus cristatus*, Crested Dog's-tail
- 10.0 *Festuca ovina*, Sheep's Fescue
- 17.6 *Festuca rubra*, Red Fescue
- 1.0 *Trisetum flavescens*, Yellow Oat-grass



EM7: MEADOW MIXTURE for SANDY SOILS

Meadow mixture EM7 contains species that are deep rooting and drought tolerant. It is suitable for well-drained sandy soils of moderate pH. Sandy soils can be drought prone and are best sown in the autumn or winter.

% **Wild flowers** (EM7F)

- 0.5 *Achillea millefolium*, Yarrow
- 0.2 *Anthyllis vulneraria*, Kidney Vetch
- 0.2 *Betonica officinalis*, Betony
- 2.0 *Centaurea nigra*, Common Knapweed
- 2.0 *Daucus carota*, Wild Carrot
- 0.2 *Echium vulgare*, Viper's-bugloss
- 2.5 *Galium verum*, Lady's Bedstraw
- 1.0 *Knautia arvensis*, Field Scabious
- 1.0 *Leucanthemum vulgare*, Oxeye Daisy
- 0.2 *Lotus corniculatus*, Bird's-foot Trefoil
- 0.2 *Malva moschata*, Musk Mallow
- 0.5 *Medicago lupulina*, Black Medick
- 0.2 *Plantago media*, Hoary Plantain
- 0.5 *Plantago lanceolata*, Ribwort Plantain
- 1.3 *Poterium sanguisorba*, Salad Burnet
- 1.5 *Prunella vulgaris*, Selfheal
- 0.5 *Ranunculus acris*, Meadow Buttercup
- 0.5 *Ranunculus bulbosus*, Bulbous Buttercup
- 2.0 *Rhinanthus minor*, Yellow Rattle
- 0.5 *Rumex acetosella*, Sheep's Sorrel
- 1.0 *Silene alba*, White Campion
- 1.0 *Silene vulgaris*, Bladder Campion
- 0.5 *Vicia sativa ssp. segetalis*, Common Vetch

% **Meadow grasses** (EG7)

- 4.0 *Agrostis capillaris*, Common Bent
- 1.6 *Agrostis vinealis*, Brown Bent
- 4.0 *Anthoxanthum odoratum*, Sweet Vernal-grass
- 5.6 *Briza media*, Quaking-grass
- 40.0 *Cynosurus cristatus*, Crested Dog's-tail
- 9.6 *Festuca ovina*, Sheep's Fescue
- 9.6 *Festuca rubra*, Red Fescue
- 5.6 *Phleum bertolonii*, Smaller Cat's-tail



EM8: MEADOW MIXTURE for WETLANDS

EM8 is suitable for seasonally wet soils in lowland areas and is based on the vegetation of traditional water meadows.

% **Wild flowers** (EM8F)

- 0.5 *Achillea millefolium*, Yarrow
- 0.2 *Agrimonia eupatoria*, Agrimony
- 0.5 *Angelica sylvestris*, Wild Angelica
- 1.0 *Betonica officinalis*, Betony
- 3.0 *Centaurea nigra*, Common Knapweed
- 0.4 *Filipendula ulmaria*, Meadowsweet
- 3.0 *Galium verum*, Lady's Bedstraw
- 0.1 *Geranium pratense*, Meadow Crane's-bill
- 0.5 *Leucanthemum vulgare*, Oxeye Daisy
- 1.8 *Lotus corniculatus*, Bird's-foot Trefoil
- 0.3 *Lotus pedunculatus*, Greater Bird's-foot Trefoil
- 1.0 *Plantago lanceolata*, Ribwort Plantain
- 0.5 *Primula veris*, Cowslip
- 0.4 *Prunella vulgaris*, Selfheal
- 0.8 *Ranunculus acris*, Meadow Buttercup
- 1.1 *Rhinanthus minor*, Yellow Rattle
- 1.4 *Rumex acetosa*, Common Sorrel
- 0.1 *Sanguisorba officinalis*, Great Burnet
- 0.3 *Silaum silaus*, Pepper Saxifrage
- 2.0 *Silene flos-cuculi*, Ragged Robin
- 0.3 *Succisa pratensis*, Devil's-bit Scabious
- 0.8 *Vicia cracca*, Tufted Vetch

% **Wetland grasses** (EG8)

- 4.0 *Agrostis capillaris*, Common Bent
- 4.0 *Anthoxanthum odoratum*, Sweet Vernal-grass
- 36.0 *Cynosurus cristatus*, Crested Dog's-tail
- 4.0 *Deschampsia cespitosa*, Tufted Hair-grass
- 20.0 *Festuca rubra*, Red Rescue
- 2.0 *Hordeum secalinum*, Meadow Barley
- 8.0 *Poa trivialis*, Rough-stalked Meadow-grass
- 2.0 *Schedonorus arundinaceus*, Tall Fescue



EM10: TUSSOCK and WAYSIDE MIXTURE

The robust wild flowers and grasses in this mixture will form a tussock structure, providing an excellent habitat for invertebrates, birds and other creatures throughout the year. Tussock and wayside grasslands are not normally grazed, and are cut only every 2-5 years to control scrub. The resulting vegetation provides year round structural habitat diversity, hibernation and nesting sites and foraging opportunities for invertebrates, reptiles and amphibians, mammals and birds. Created biodiversity can be huge.

% **Wild flowers** (EM10F)

|     |   |
|-----|---|
| 0.4 | <i>Achillea millefolium</i> , Yarrow              |
| 0.5 | <i>Agrimonia eupatoria</i> , Agrimony             |
| 0.4 | <i>Alliaria petiolate</i> , Garlic Mustard        |
| 0.4 | <i>Anthriscus sylvestris</i> , Cow Parsley        |
| 1.0 | <i>Arctium minus</i> , Lesser Burdock             |
| 2.0 | <i>Centaurea nigra</i> , Common Knapweed          |
| 0.5 | <i>Centaurea scabiosa</i> , Greater Knapweed      |
| 1.0 | <i>Cruciata laevipes</i> , Crosswort              |
| 1.0 | <i>Daucus carota</i> , Wild Carrot                |
| 2.4 | <i>Dipsacus fullonum</i> , Wild Teasel            |
| 0.2 | <i>Filipendula ulmaria</i> , Meadowsweet          |
| 2.0 | <i>Galium album</i> , Hedge Bedstraw              |
| 0.4 | <i>Galium verum</i> , Lady's Bedstraw             |
| 0.4 | <i>Geranium pratense</i> , Meadow Cranesbill      |
| 0.4 | <i>Knautia arvensis</i> , Field Scabious          |
| 1.5 | <i>Leucanthemum vulgare</i> , Oxeye Daisy         |
| 1.0 | <i>Malva moschata</i> , Musk Mallow               |
| 0.5 | <i>Origanum vulgare</i> , Wild Marjoram           |
| 1.5 | <i>Plantago lanceolata</i> , Ribwort Plantain     |
| 1.5 | <i>Silene dioica</i> , Red Campion                |
| 0.5 | <i>Silene vulgaris</i> , Bladder Campion          |
| 0.4 | <i>Vicia sativa ssp. segetalis</i> , Common Vetch |
| 0.1 | <i>Verbascum thapsus</i> , Great Mullein          |

% **Tussock grasses** (EG10)

|      |  |
|------|--|
| 47.0 | <i>Cynosurus cristatus</i> , Crested Dog's-tail    |
| 4.0  | <i>Dactylis glomerata</i> , Cocksfoot              |
| 8.0  | <i>Festuca rubra</i> , Red Fescue                  |
| 4.0  | <i>Poa pratensis</i> , Smooth-stalked Meadow-grass |
| 2.0  | <i>Schedonorus arundinaceus</i> , Tall Fescue      |
| 15.0 | <i>Schedonorus pratensis</i> , Meadow Fescue       |



## EM11: CRICKLADE MIXTURE

EM11 is harvested from North Meadow at Cricklade. North Meadow is an MG4 flood plain meadow, probably the finest remaining example in The British Isles. Limited supplies of seed, and sometimes not available.



## EM12: FOLLY FARM MEADOW MIXTURE

EM12 is harvested from the Avon Wildlife Trust meadows at Folly Farm in Somerset.



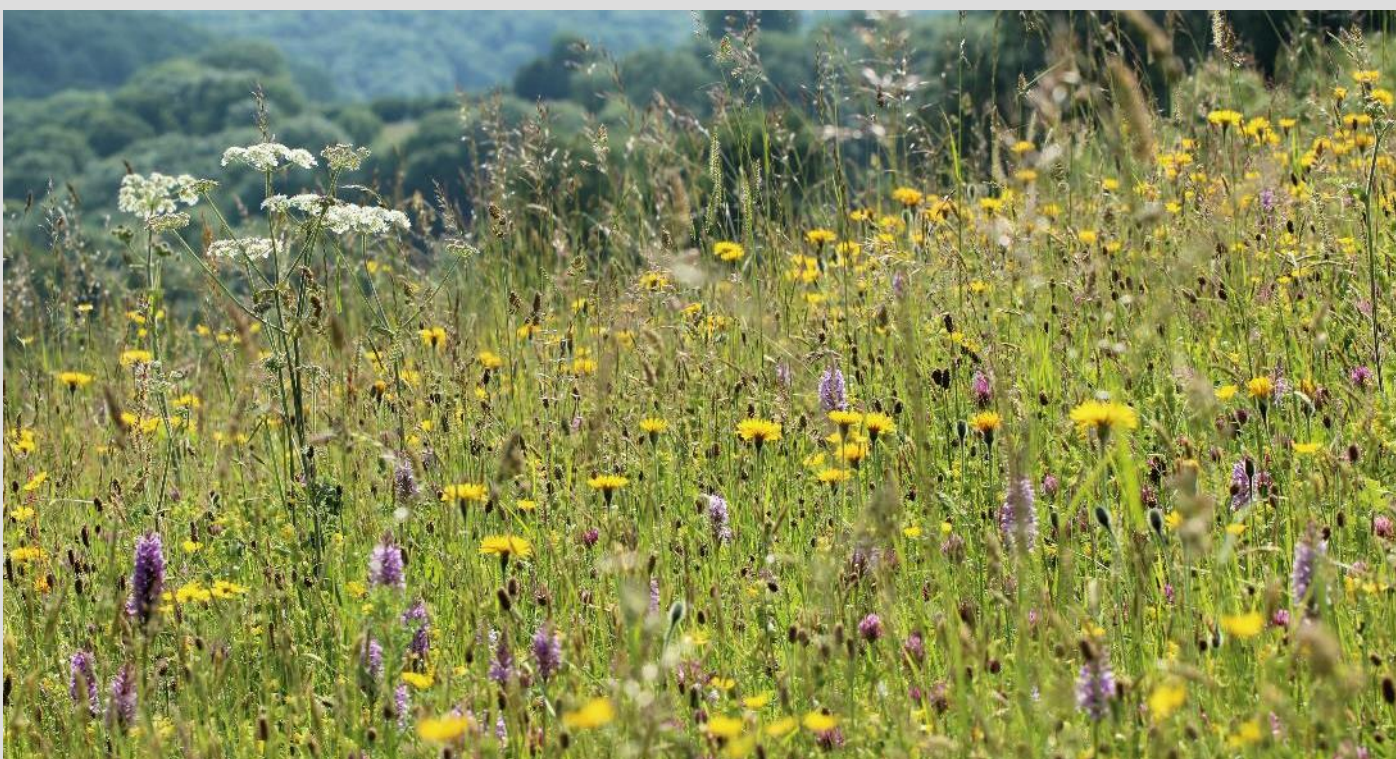
## EM13: AVIS MEADOW MIXTURE

EM13 is harvested from Avis meadow which is a nature reserve owned and managed by Wiltshire Wildlife Trust, situated in the upper Thames tributary system in Wiltshire.



## EM18: S<sup>T</sup> CATHERINE MIXTURE

EM18 is harvested from hay meadows on thin soils over limestone at S<sup>t</sup> Catherine, just north of Bath. This is a superb mixture rich in calcareous grassland species with a wild flower seed content well over 50%.



## EM31: CLATTINGER MEADOWS

Clattinger Farm is a Wiltshire Wildlife Trust Nature Reserve situated on the upper Thames flood plain. The site is SSSI, consisting of both flood plain meadow MG4 grasslands and lowland meadow MG5 grasslands. Limited supplies of seed and sometimes not available.



## EM32: HIGHGROVE MEADOWS

EM32 is a great mixture harvested from the special meadows at Highgrove House near Tetbury, Wiltshire.



## EM33: WELSH MARCHES UPLAND MEADOWS

Mixture EM33 has been brush harvested from upland hay meadows on the border between Wales and England.



## EM34: MIXED DIVERSE MEADOWS

EM34 is a blended brush harvested mixture from diverse meadows. It contains a huge number of wild meadow species, is brimming with biodiversity, and will adapt to most conditions.





## EP1: POND EDGE MIXTURE

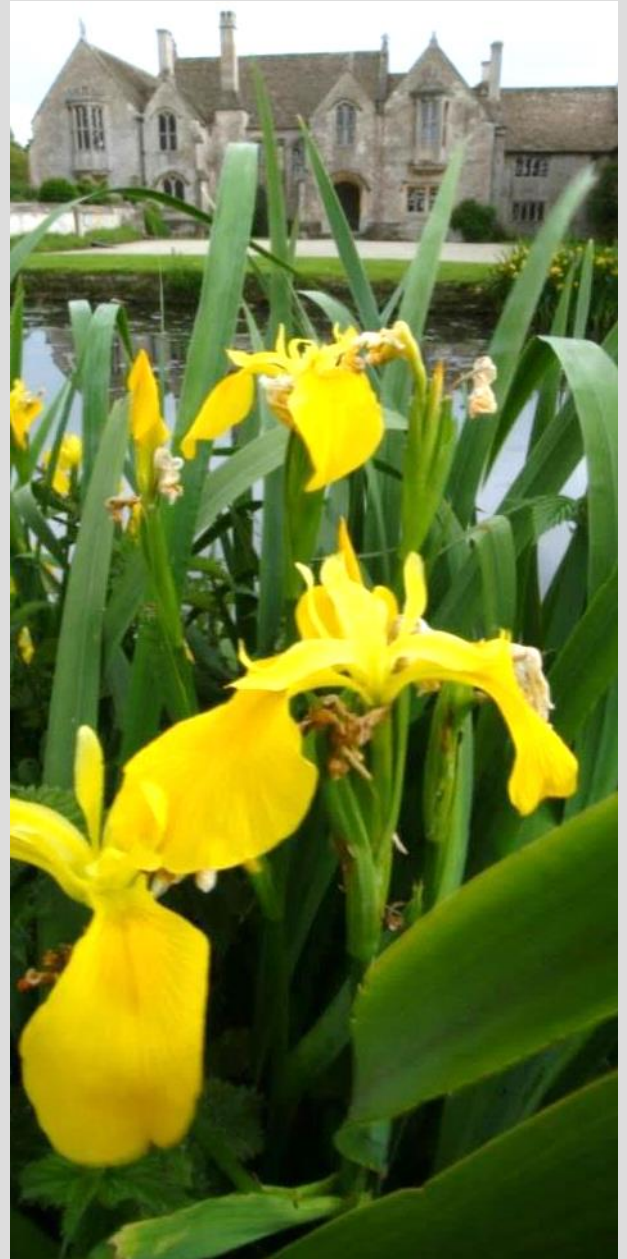
Pond Edge Mixture EP1 contains wild flowers and grasses suitable for sowing at the wet margins of ponds, streams and ditches. EP1 may be sown as a 1m band at the water margin, extending further into boggy areas. Beyond this, sow wetland mixture EM8, or another suitable meadow mixture.

### % **Wild flowers** (EP1F)

- 0.5 *Angelica sylvestris*, Wild Angelica
- 0.1 *Caltha palustris*, Marsh Marigold
- 0.5 *Carex echinata*, Star Sedge
- 0.2 *Carex pendula*, Pendulous Sedge
- 2.0 *Centaurea nigra*, Common Knapweed
- 1.2 *Cruciata laevipes*, Crosswort
- 0.5 *Dipsacus fullonum*, Wild Teasel
- 0.1 *Eupatorium cannabinum*, Hemp Agrimony
- 3.5 *Filipendula ulmaria*, Meadowsweet
- 0.5 *Geum rivale*, Water Avens
- 8.0 *Iris pseudacorus*, Yellow Flag-iris
- 0.2 *Lycopus europaeus*, Gypsywort
- 0.1 *Lysimachia vulgaris*, Yellow Loosestrife
- 0.2 *Lythrum salicaria*, Purple Loosestrife
- 0.5 *Oenanthe pimpinelloides*, Corky-fruited Water-dropwort
- 0.5 *Prunella vulgaris*, Selfheal
- 0.1 *Pulicaria dysenterica*, Common Fleabane
- 1.0 *Silene dioica*, Red Campion
- 0.1 *Silene flos-cuculi*, Ragged Robin
- 0.1 *Thalictrum flavum*, Common Meadow-rue
- 0.1 *Typha latifolia*, Bullrush

### % **Wetland grasses** (EG8)

- 4.0 *Agrostis capillaris*, Common Bent
- 4.0 *Anthoxanthum odoratum*, Sweet Vernal-grass
- 36.0 *Cynosurus cristatus*, Crested Dog's-tail
- 4.0 *Deschampsia cespitosa*, Tufted Hair-grass
- 20.0 *Festuca rubra*, Red Rescue
- 2.0 *Hordeum secalinum*, Meadow Barley
- 8.0 *Poa trivialis*, Rough-stalked Meadow-grass
- 2.0 *Schedonorus arundinaceus*, Tall Fescue



## EH1: HEDGEROW MIXTURE

EH1 contains species that are adapted to semi-shade and is suitable for sowing alongside newly planted and established hedges, and on rides and woodland margins. The flora at the base of hedges is vulnerable to field operations. Mixture EH1 can be used to repair past damage, or may be sown when planting a new hedge.

% **Wild flowers (EH1F)**

- 2.0 *Agrimonia eupatoria*, Agrimony
- 0.1 *Alliaria petiolata*, Garlic Mustard
- 1.0 *Arctium minus*, Lesser Burdock
- 0.1 *Anthriscus sylvestris*, Cow Parsley
- 1.5 *Carex echinata*, Star Sedge
- 2.0 *Centaurea nigra*, Common Knapweed
- 0.5 *Chaerophyllum temulum*, Rough Chervil
- 1.0 *Cruciata laevipes*, Crosswort
- 0.8 *Daucus carota*, Wild Carrot
- 1.5 *Dipsacus fullonum*, Wild Teasel
- 1.0 *Filipendula ulmaria*, Meadowsweet
- 0.5 *Galium album*, Hedge Bedstraw
- 0.2 *Geranium pratense*, Meadow Crane's-bill
- 1.5 *Leucanthemum vulgare*, Moon Daisy
- 0.1 *Origanum vulgare*, Wild Marjoram
- 0.2 *Primula veris*, Cowslip
- 1.0 *Prunella vulgaris*, Selfheal
- 0.2 *Rumex acetosa*, Common Sorrel
- 0.1 *Saponaria officinalis*, Soapwort
- 2.5 *Silene dioica*, Red Campion
- 1.0 *Silene vulgaris*, Bladder Campion
- 1.0 *Torilis japonica*, Upright Hedge-parsley
- 0.2 *Vicia cracca*, Tufted Vetch

% **Grasses (EG9)**

- 5.0 *Agrostis capillaris*, Common Bent
- 4.0 *Anthoxanthum odoratum*, Sweet Vernal-grass
- 1.0 *Brachypodium sylvaticum*, False Brome
- 45.0 *Cynosurus cristatus*, Crested Dog's-tail
- 5.0 *Deschampsia cespitosa*, Tufted Hair-grass
- 10.0 *Festuca rubra*, Red-fescue
- 10.0 *Poa nemoralis*, Wood Meadow-grass



EW1: WOODLAND MIXTURE

EW1 is a very good mixture of woodland wild flowers and grasses that will bloom in spring and early summer. Woodland wild flowers require some shade to thrive, so use this mixture in established woods, or in young woodland, as the canopy begins to close in.

% **Wild flowers** (EW1F)

- 0.2 *Alliaria petiolata*, Garlic Mustard
- 1.0 *Allium ursinum*, Ransoms
- 0.5 *Anthriscus sylvestris*, Cow Parsley
- 0.5 *Arctium minus*, Lesser Burdock
- 0.1 *Campanula trachelium*, Nettle-leaved Bell-flower
- 0.2 *Carex sylvatica*, Wood Sedge
- 1.5 *Chaerophyllum temulum*, Rough Chervil
- 3.0 *Digitalis purpurea*, Foxglove
- 0.1 *Eupatorium cannabinum*, Hemp-agrimony
- 1.5 *Filipendula ulmaria*, Meadowsweet
- 1.0 *Galium album*, Hedge Bedstraw
- 0.2 *Geum urbanum*, Wood Avens
- 3.0 *Hyacinthoides non-scripta*, Bluebell
- 0.5 *Iris foetidissima*, Gladdon
- 0.5 *Prunella vulgaris*, Selfheal
- 4.0 *Silene dioica*, Red Campion
- 0.2 *Teucrium scorodonia*, Wood Sage
- 1.0 *Torilis japonica*, Upright Hedge-parsley
- 1.0 *Vicia cracca*, Tufted Vetch

% **Grasses** (EG9)

- 5.0 *Agrostis capillaris*, Common Bent
- 4.0 *Anthoxanthum odoratum*, Sweet Vernal-grass
- 1.0 *Brachypodium sylvaticum*, False Brome
- 45.0 *Cynosurus cristatus*, Crested Dog's-tail
- 5.0 *Deschampsia cespitosa*, Tufted Hair-grass
- 10.0 *Festuca rubra*, Red-fescue
- 10.0 *Poa nemoralis*, Wood Meadow-grass



EC1 and EC2 CORNFIELD MIXTURES

Cornfield mixtures produce a brilliant show of flowers in June and July from an autumn, winter or early spring sowing. Sow alone at 2g/m<sup>2</sup> onto prepared bare soil. All species in EC1 and EC2 are hardy and wild to the British Isles. They are self-sustaining year to year with annual autumn cultivation. Alternatively, sow as a colourful “nurse” for a meadow mixture.



EC1: STANDARD CORNFIELD MIXTURE

EC2: SPECIAL CORNFIELD MIXTURE

| %    | Wild flowers                             |
|------|--|
| 50.0 | <i>Agrostemma githago</i> , Corn Cockle  |
| 20.0 | <i>Centaurea cyanus</i> , Cornflower     |
| 5.0  | <i>Cota austriaca</i> , Corn Chamomile   |
| 15.0 | <i>Glebionis segetum</i> , Corn Marigold |
| 10.0 | <i>Papaver rhoeas</i> , Common Poppy     |

| %    | Wild flowers                                     |
|------|--|
| 30.0 | <i>Agrostemma githago</i> , Corn Cockle          |
| 25.0 | <i>Centaurea cyanus</i> , Cornflower             |
| 4.0  | <i>Cota austriaca</i> , Corn Chamomile           |
| 15.0 | <i>Glebionis segetum</i> , Corn Marigold         |
| 2.0  | <i>Linum bienne</i> , Pale Flax                  |
| 1.0  | <i>Matricaria chamomilla</i> , Scented Mayweed   |
| 10.0 | <i>Papaver rhoeas</i> , Common Poppy             |
| 8.0  | <i>Ranunculus arvensis</i> , Corn Buttercup      |
| 2.0  | <i>Sinapis arvensis</i> , Charlock               |
| 1.0  | <i>Tripleurospermum inodorum</i> , Mayweed       |
| 2.0  | <i>Veronica persica</i> , Common Field-speedwell |



COMPLETE MIXTURES

Listed below are the prices for complete mixtures

|   |                                  | £/100kg   | £/10kg   | £/kilo | £/100g | Page |
|---|----------------------------------|-----------|----------|--------|--------|------|
| <b>General Purpose Meadow Mixtures</b>    |                                  |           |          |        |        |      |
| EM1                                       | Basic General Purpose            | 3,550.00  | 386.00   | 42.00  | 14.00  | 12   |
| EM2                                       | Standard General Purpose         | 4,570.00  | 497.00   | 54.00  | 14.00  | 13   |
| EM3                                       | Special General Purpose          | 5,920.00  | 644.00   | 70.00  | 14.00  | 14   |
| <b>Meadow Mixtures for Specific Soils</b> |                                  |           |          |        |        |      |
| EM4                                       | For Clay Soils                   | 6,430.00  | 699.00   | 76.00  | 14.00  | 15   |
| EM5                                       | For Loamy Soils                  | 6,430.00  | 699.00   | 76.00  | 14.00  | 16   |
| EM6                                       | For Chalk and Limestone Soils    | 6,770.00  | 736.00   | 80.00  | 14.00  | 17   |
| EM7                                       | For Sandy Soils                  | 6,770.00  | 736.00   | 80.00  | 14.00  | 18   |
| EM8                                       | For Wetlands                     | 7,280.00  | 791.00   | 86.00  | 14.00  | 19   |
| EM10                                      | Tussock and Wayside Mixture      | 6,260.00  | 680.00   | 74.00  | 14.00  | 20   |
| <b>Brush Harvested Meadow Mixtures</b>    |                                  |           |          |        |        |      |
| EM11                                      | Cricklade North Meadows          | 10,120.00 | 1,100.00 | 120.00 | 14.00  | 21   |
| EM12                                      | Folly Farm Meadows               | 10,120.00 | 1,100.00 | 120.00 | 14.00  | 21   |
| EM13                                      | Avis Meadows                     | 9,290.00  | 1,010.00 | 110.00 | 14.00  | 22   |
| EM18                                      | S <sup>T</sup> Catherine Meadows | 7,620.00  | 828.00   | 90.00  | 14.00  | 22   |
| EM31                                      | Clattinger Meadows               | 9,290.00  | 1,010.00 | 110.00 | 14.00  | 23   |
| EM32                                      | Highgrove Meadows                | 9,290.00  | 1,010.00 | 110.00 | 14.00  | 23   |
| EM33                                      | Welsh Borders Upland Meadows     | 6,770.00  | 736.00   | 80.00  | 14.00  | 24   |
| EM34                                      | Mixed Diverse Meadows            | 6,260.00  | 680.00   | 74.00  | 14.00  | 24   |
| <b>Special Purpose Mixtures</b>           |                                  |           |          |        |        |      |
| EP1                                       | Pond Edge Mixture                | 8,300.00  | 902.00   | 98.00  | 14.00  | 25   |
| EH1                                       | Hedgerow Mixture                 | 7,110.00  | 773.00   | 84.00  | 14.00  | 26   |
| EW1                                       | Woodland Mixture                 | 8,300.00  | 902.00   | 98.00  | 14.00  | 27   |
| <b>Cornfield Annual Mixtures</b>          |                                  |           |          |        |        |      |
| EC1                                       | Standard Cornfield Mixture       | 6,770.00  | 736.00   | 80.00  | 14.00  | 28   |
| EC2                                       | Special Cornfield Mixture        | 9,290.00  | 1,010.00 | 110.00 | 14.00  | 28   |

PART MIXTURES

Listed below are the prices for part mixtures




|                                   |  | £/100kg  | £/10kg   | £/kilo | £/100g | Page |
|-----------------------------------|--|----------|----------|--------|--------|------|
| <b>100% Wild Flower Mixtures</b>  |  |          |          |        |        |      |
| EM1F                              | Basic General Purpose                        | - - - -  | 2,210.00 | 240.00 | 26.00  | 12   |
| EM2F                              | Standard General Purpose                     | - - - -  | 2,390.00 | 260.00 | 28.00  | 13   |
| EM3F                              | Special General Purpose                      | - - - -  | 2,670.00 | 290.00 | 31.00  | 14   |
| EM4F                              | Wild Flowers for Clay Soils                  | - - - -  | 2,760.00 | 300.00 | 32.00  | 15   |
| EM5F                              | Wild Flowers for Loamy Soils                 | - - - -  | 2,760.00 | 300.00 | 32.00  | 16   |
| EM6F                              | Wild Flowers for Chalk and Limestone Soils   | - - - -  | 2,940.00 | 320.00 | 35.00  | 17   |
| EM7F                              | Wild Flowers for Sandy Soils                 | - - - -  | 2,940.00 | 320.00 | 35.00  | 18   |
| EM8F                              | Wild Flowers for Wetlands                    | - - - -  | 3,040.00 | 330.00 | 36.00  | 19   |
| EM10F                             | Tussock Wild Flowers                         | - - - -  | 2,670.00 | 290.00 | 31.00  | 20   |
| EP1F                              | Pond Edge Wild Flowers                       | - - - -  | 3,220.00 | 350.00 | 38.00  | 25   |
| EH1F                              | Hedgerow Wild Flowers                        | - - - -  | 2,760.00 | 300.00 | 32.00  | 26   |
| EW1F                              | Woodland Wild Flowers                        | - - - -  | 3,220.00 | 350.00 | 38.00  | 27   |
| <b>100% Meadow Grass Mixtures</b> |  |          |          |        |        |      |
| EG1                               | Basic General Purpose                        | 1,980.00 | 220.00   | 24.00  | 12.00  | 12   |
| EG4                               | Meadow Grasses for Clay Soils                | 3,390.00 | 368.00   | 40.00  | 12.00  | 15   |
| EG5                               | Meadow Grasses for Loamy Soils               | 3,390.00 | 368.00   | 40.00  | 12.00  | 16   |
| EG6                               | Meadow Grasses for Chalk and Limestone Soils | 4,070.00 | 442.00   | 48.00  | 12.00  | 17   |
| EG7                               | Meadow Grasses for Sandy Soils               | 3,390.00 | 368.00   | 40.00  | 12.00  | 18   |
| EG8                               | Meadow Grasses for Wetlands                  | 3,730.00 | 405.00   | 44.00  | 12.00  | 19   |
| EG9                               | Meadow Grasses for Hedgerow and Woodland     | 3,730.00 | 405.00   | 44.00  | 12.00  | 26   |
| EG10                              | Tussock Grass Mixture                        | 3,050.00 | 331.00   | 36.00  | 12.00  | 20   |

## TERMS and CONDITIONS

All seeds are offered subject to availability and being unsold at the time of ordering. The up to date availability, price and specification of our species and mixtures is as detailed on our website, unless otherwise stated. We guarantee that our seeds are of high viability and purity, true to type and of the correct weight when delivered. Seed found not to meet these standards may be returned in full, undamaged, within 30 days, for a replacement or refund. The performance of our seeds will be influenced by the storage conditions after despatch and the site conditions after sowing.

Seed is sold by weight and any quantity may be ordered. The price is calculated from the weight bracket that the quantity falls into. For example, 35g of Yarrow seed will cost 3.5 times the 10g price: 3.5 x £10.00 = £35.00. Please note that if you require only a few grams it is often cheaper to order 10g.

All species coloured in green with the *scientific name in italics* are of wild British origin. Almost all seeds listed have been grown on our farms and for each species we maintain stock records tracing back to the place of wild origin. The county of origin is given in brackets. During cultivation we take great care to maintain the true character of the wild type and to preserve a very high level of genetic variation within each species.

|    | <b>Scientific name</b><br>Common name (origin)                     | Seeds/g               | £/10kg   | £/kg    | £/100g  | £/10g | £/g  |
|---|--|-----------------------|----------|---------|---------|-------|------|
|    | <b><i>Achillea millefolium</i></b><br>Yarrow (Shropshire)          | 6,000                 | 1,840.00 | 200.00  | 30.00   | 10.00 | 3.00 |
|    | <b><i>Aethusa cynapium</i></b><br>Fool's Parsley (England)         | 300                   | - - - -  | 160.00  | 20.00   | 10.00 | 3.00 |
|    | <b><i>Agrimonia eupatoria</i></b><br>Agrimony (Oxfordshire)        | 50                    | - - - -  | 280.00  | 45.00   | 10.00 | 3.00 |
|   | <b><i>Agrostemma githago</i></b><br>Corncockle (England)           | 70                    | 368.00   | 40.00   | 20.00   | 10.00 | 3.00 |
|  | <b><i>Alliaria petiolata</i></b><br>Garlic Mustard (Cumbria)       | 500                   | 2,210.00 | 240.00  | 35.00   | 10.00 | 3.00 |
|  | <b><i>Allium ursinum</i></b><br>Ransoms (Staffordshire)            | 150                   | - - - -  | 620.00  | 67.00   | 10.00 | 3.00 |
|  | <b><i>Althaea officinalis</i></b><br>Marsh-mallow (Suffolk)        | 450                   | - - - -  | 480.00  | 52.00   | 10.00 | 3.00 |
|  | <b><i>Anacamptis pyramidalis</i></b><br>Pyramidal Orchid (Norfolk) | 10,000<br>(with soil) | - - - -  | - - - - | - - - - | 16.00 | 5.00 |
|  | <b><i>Angelica sylvestris</i></b><br>Wild Angelica (Somerset)      | 160                   | - - - -  | 290.00  | 32.00   | 14.00 | 3.00 |
|  | <b><i>Anthriscus sylvestris</i></b><br>Cow Parsley (Norfolk)       | 300                   | - - - -  | 260.00  | 28.00   | 10.00 | 3.00 |
|  | <b><i>Anthyllis vulneraria</i></b><br>Kidney Vetch (Berkshire)     | 400                   | 6,350.00 | 720.00  | 78.00   | 10.00 | 3.00 |
|  | <b><i>Aquilegia vulgaris</i></b><br>Columbine (Somerset)           | 600                   | - - - -  | - - - - | - - - - | 10.00 | 3.00 |
|  | <b><i>Arctium minus</i></b><br>Lesser Burdock (Somerset)           | 60                    | - - - -  | 276.00  | 30.00   | 10.00 | 3.00 |
|  | <b><i>Arum maculatum</i></b><br>Lords-and-Ladies (Oxfordshire)     | 20                    | - - - -  | 520.00  | 56.00   | 10.00 | 3.00 |
|  | <b><i>Ballota nigra</i></b><br>Black Horehound (Berkshire)         | 1,200                 | - - - -  | - - - - | - - - - | 16.00 | 5.00 |

|    | <b>Scientific name</b><br>Common name (origin)                            | Seeds/g | £/10kg   | £/kg   | £/100g | £/10g | £/g  |
|---|---|---------|----------|--------|--------|-------|------|
|    | <b><i>Barbarea vulgaris</i></b><br>Winter Cress (Somerset)                | 1,500   | -----    | 320.00 | 35.00  | 10.00 | 3.00 |
|    | <b><i>Betonica officinalis</i></b><br>Betony (Yorkshire)                  | 700     | 5,150.00 | 560.00 | 60.00  | 10.00 | 3.00 |
|    | <b><i>Blackstonia perfoliata</i></b><br>Yellow-wort (Somerset)            | 20,000  | -----    | -----  | -----  | 34.00 | 4.00 |
|    | <b><i>Bryonia dioica</i></b><br>White Bryony (Berkshire)                  | -----   | -----    | -----  | -----  | 10.00 | 3.00 |
|    | <b><i>Bistorta officinalis</i></b><br>Common Bistort (Yorkshire)          | 200     | -----    | -----  | -----  | 48.00 | 5.00 |
|    | <b><i>Calluna vulgaris</i></b><br>Heather (Derbyshire)                    | 10,000  | -----    | -----  | -----  | 12.00 | 3.00 |
|    | <b><i>Caltha palustris</i></b><br>Marsh Marigold (Norfolk)                | 1,000   | -----    | -----  | -----  | 18.00 | 3.00 |
|   | <b><i>Campanula latifolia</i></b><br>Giant Bellflower (Cumbria)           | 3,000   | -----    | -----  | 60.00  | 10.00 | 3.00 |
|  | <b><i>Campanula rotundifolia</i></b><br>Harebell (Berkshire)              | 15,000  | -----    | -----  | 300.00 | 34.00 | 8.00 |
|  | <b><i>Campanula trachelium</i></b><br>Nettle-leaved Bellflower (Somerset) | 4,200   | -----    | -----  | 80.00  | 12.00 | 3.00 |
|  | <b><i>Cardamine hirsuta</i></b><br>Hairy Bitter-cress (Somerset)          | 5,000   | -----    | 260.00 | 28.00  | 10.00 | 3.00 |
|  | <b><i>Carduus nutans</i></b><br>Musk Thistle                              | 500     | -----    | -----  | -----  | 10.00 | 3.00 |
|  | <b><i>Centaurea cyanus</i></b><br>Cornflower (Hertfordshire)              | 250     | 1,360.00 | 148.00 | 20.00  | 10.00 | 3.00 |
|  | <b><i>Centaurea nigra</i></b><br>Common Knapweed (Somerset)               | 450     | 2,580.00 | 280.00 | 30.00  | 10.00 | 3.00 |
|  | <b><i>Centaurea scabiosa</i></b><br>Greater Knapweed (Dorset)             | 160     | 3,500.00 | 380.00 | 41.00  | 10.00 | 3.00 |
|  | <b><i>Chaerophyllum temulum</i></b><br>Rough Chervil (Somerset)           | 500     | 3,500.00 | 380.00 | 41.00  | 10.00 | 3.00 |
|  | <b><i>Chelidonium majus</i></b><br>Greater Celandine (Somerset)           | 1,600   | -----    | -----  | 100.00 | 12.00 | 3.00 |
|  | <b><i>Cirsium eriophorum</i></b><br>Woolly thistle (Somerset)             | 200     | -----    | -----  | 90.00  | 12.00 | 3.00 |
|  | <b><i>Comarum palustris</i></b><br>Marsh Cinquefoil                       | 5,600   | -----    | -----  | -----  | ----- | 8.00 |



|    | <b>Scientific name</b><br>Common name (origin)                   | Seeds/g               | £/10kg   | £/kg   | £/100g | £/10g  | £/g   |
|---|--|-----------------------|----------|--------|--------|--------|-------|
|    | <b>Conopodium majus</b><br>Pignut (Oxfordshire)                  | 500                   | -----    | -----  | -----  | 15.00  | 3.00  |
|    | <b>Convolvulus arvensis</b><br>Field Bindweed (Somerset)         | 90                    | -----    | 340.00 | 36.00  | 10.00  | 3.00  |
|    | <b>Cota austriaca</b><br>Corn Chamomile (England)                | 2,000                 | 1,100.00 | 120.00 | 20.00  | 10.00  | 3.00  |
|    | <b>Crambe maritima</b><br>Sea-kale (Kent)                        | 15                    | -----    | 520.00 | 56.00  | 12.00  | 3.00  |
|    | <b>Crithmum maritimum</b><br>Rock Samphire (Gower)               | 250                   | -----    | 420.00 | 45.00  | 10.00  | 3.00  |
|    | <b>Cruciata laevipes</b><br>Crosswort (Dorset)                   | 200                   | 3,130.00 | 340.00 | 36.00  | 10.00  | 3.00  |
|   | <b>Cynoglossum officinale</b><br>Hound's-Tongue (Oxfordshire)    | 20                    | -----    | -----  | 33.00  | 10.00  | 3.00  |
|  | <b>Dactylorhiza fuchsii</b><br>Common Spotted-Orchid (Somerset)  | 10,000<br>(with soil) | -----    | 660.00 | 71.00  | 10.00  | 3.00  |
|  | <b>Dactylorhiza fuchsii</b><br>Common Spotted-Orchid (Somerset)  | 1m<br>(pure seed)     | -----    | -----  | -----  | 660.00 | 71.00 |
|  | <b>Daucus carota</b><br>Wild Carrot (Dorset)                     | 1,000                 | 1,750.00 | 190.00 | 20.00  | 10.00  | 3.00  |
|  | <b>Digitalis purpurea</b><br>Foxglove (Suffolk)                  | 13,000                | 2,020.00 | 220.00 | 30.00  | 10.00  | 3.00  |
|  | <b>Dipsacus fullonum</b><br>Wild Teasel (Lincolnshire)           | 300                   | 1,610.00 | 175.00 | 20.00  | 10.00  | 3.00  |
|  | <b>Dipsacus pilosus</b><br>Small Teasel (England)                | 400                   | -----    | -----  | -----  | -----  | 4.00  |
|  | <b>Echium vulgare</b><br>Viper's-Bugloss (Hertfordshire)         | 250                   | 5,340.00 | 580.00 | 63.00  | 10.00  | 3.00  |
|  | <b>Epilobium montanum</b><br>Broad-leaved Willow-herb (Somerset) | 16,000                | -----    | 290.00 | 31.00  | 10.00  | 3.00  |
|  | <b>Epipactis palustris</b><br>Marsh Helleborine (various)        | 10,000<br>(with soil) | -----    | 900.00 | 97.00  | 12.00  | 3.00  |
|  | <b>Ervilia sylvatica</b><br>Wood Vetch (various)                 | 100                   | -----    | -----  | 100.00 | 12.00  | 3.00  |
|  | <b>Eryngium maritimum</b><br>Sea Holly (Norfolk)                 | 20                    | -----    | 520.00 | 56.00  | 10.00  | 3.00  |
|  | <b>Eupatorium cannabinum</b><br>Hemp-Agrimony (Suffolk)          | 4,000                 | -----    | 980.00 | 105.00 | 12.00  | 3.00  |

|    | <b>Scientific name</b><br>Common name (origin)                     | Seeds/g | £/10kg   | £/kg    | £/100g  | £/10g   | £/g  |
|---|--|---------|----------|---------|---------|---------|------|
|    | <b>Filipendula ulmaria</b><br>Meadowsweet (Shropshire)             | 1,000   | 2,580.00 | 280.00  | 30.00   | 10.00   | 3.00 |
|    | <b>Filipendula vulgaris</b><br>Dropwort (Cumbria)                  | 1,000   | - - - -  | 580.00  | 63.00   | 10.00   | 3.00 |
|    | <b>Fragaria vesca</b><br>Wild Strawberry (Norfolk)                 | 2,000   | - - - -  | - - - - | - - - - | 25.00   | 5.00 |
|    | <b>Fumaria officinalis</b><br>Common Fumitory (England)            | - - - - | - - - -  | - - - - | 20.00   | 10.00   | 3.00 |
|    | <b>Galeopsis speciosa</b><br>Large-flowered Hemp-nettle            | 250     | - - - -  | - - - - | - - - - | - - - - | 5.00 |
|    | <b>Galium album</b><br>Hedge Bedstraw (Somerset)                   | 1,500   | 1,520.00 | 165.00  | 21.00   | 10.00   | 3.00 |
|   | <b>Galium aparine</b><br>Cleavers (Somerset)                       | - - - - | - - - -  | 120.00  | 20.00   | 10.00   | 3.00 |
|  | <b>Galium verum</b><br>Lady's Bedstraw (Derbyshire)                | 2,500   | 3,500.00 | 380.00  | 41.00   | 10.00   | 3.00 |
|  | <b>Genista tinctoria</b><br>Dyers Greenweed (Somerset)             | 300     | - - - -  | - - - - | 120.00  | 14.00   | 3.00 |
|  | <b>Geranium dissectum</b><br>Cut-Leaved Crane's-Bill (Somerset)    | 800     | - - - -  | 480.00  | 51.00   | 10.00   | 3.00 |
|  | <b>Geranium lucidum</b><br>Shining Crane's-Bill (Somerset)         | 1,000   | - - - -  | - - - - | - - - - | - - - - | 4.00 |
|  | <b>Geranium molle</b><br>Dove's-foot Crane's-Bill (Somerset)       | 1,000   | - - - -  | - - - - | - - - - | 10.00   | 3.00 |
|  | <b>Geranium pratense</b><br>Meadow Crane's-Bill (Gloucestershire)  | 100     | 5,520.00 | 600.00  | 64.00   | 10.00   | 3.00 |
|  | <b>Geranium pyrenaicum</b><br>Hedge Crane's-bill (Somerset)        | 600     | 4,780.00 | 520.00  | 56.00   | 10.00   | 3.00 |
|  | <b>Geranium sanguineum</b><br>Bloody Crane's-Bill (Northumberland) | 150     | - - - -  | - - - - | - - - - | - - - - | 4.00 |
|  | <b>Geum rivale</b><br>Water Avens (Staffordshire)                  | 700     | - - - -  | 580.00  | 63.00   | 12.00   | 3.00 |
|  | <b>Geum urbanum</b><br>Wood Avens (Staffordshire)                  | 400     | - - - -  | 250.00  | 27.00   | 10.00   | 3.00 |
|  | <b>Glaucium flavum</b><br>Yellow Horned-poppy (England)            | 770     | - - - -  | 620.00  | 67.00   | 10.00   | 3.00 |
|  | <b>Glebionis segetum</b><br>Corn Marigold (Cornwall)               | 600     | 1,660.00 | 180.00  | 20.00   | 10.00   | 3.00 |

|    | <b>Scientific name</b><br>Common name (origin)                              | Seeds/g | £/10kg   | £/kg   | £/100g | £/10g | £/g  |
|---|---|---------|----------|--------|--------|-------|------|
|    | <b><i>Helianthemum nummularium</i></b><br>Common Rock-rose (Glos)           | 900     | -----    | -----  | -----  | 18.00 | 4.00 |
|    | <b><i>Hesperis matronalis</i></b><br>Dames-violet                           | 400     | -----    | 300.00 | 32.00  | 10.00 | 3.00 |
|    | <b><i>Heracleum sphondylium</i></b><br>Hogweed (Somerset)                   | 150     | -----    | 160.00 | 20.00  | 10.00 | 3.00 |
|    | <b><i>Hippocrepis comosa</i></b><br>Horseshoe Vetch (Wiltshire)             | 350     | -----    | 900.00 | 97.00  | 14.00 | 5.00 |
|    | <b><i>Hyacinthoides non-scripta</i></b><br>Bluebell (Carmarthenshire)       | 120     | 4,600.00 | 500.00 | 54.00  | 10.00 | 3.00 |
|    | <b><i>Hypericum montanum</i></b><br>Pale St John's Wort (England)           | -----   | -----    | 560.00 | 60.00  | 10.00 | 3.00 |
|    | <b><i>Iberis amara</i></b><br>Wild Candytuft (Hertfordshire)                | 1,000   | -----    | -----  | -----  | ----- | 4.00 |
|   | <b><i>Inula conyzae</i></b><br>Ploughman's Spikenard (Oxfordshire)          | 4,000   | -----    | -----  | -----  | 18.00 | 3.00 |
|  | <b><i>Iris foetidissima</i></b><br>Gladdon (Somerset)                       | 20      | -----    | 440.00 | 50.00  | 10.00 | 3.00 |
|  | <b><i>Iris pseudacorus</i></b><br>Yellow Flag-iris (Staffordshire)          | 20      | 4,780.00 | 520.00 | 56.00  | 10.00 | 3.00 |
|  | <b><i>Knautia arvensis</i></b><br>Field Scabious (Derbyshire)               | 150     | 3,310.00 | 360.00 | 40.00  | 10.00 | 3.00 |
|  | <b><i>Lapsana communis</i></b><br>Nipplewort (Oxfordshire)                  | 800     | -----    | 330.00 | 35.00  | 10.00 | 3.00 |
|  | <b><i>Lathyrus pratensis</i></b><br>Meadow Vetchling (Lincolnshire)         | 60      | -----    | 650.00 | 70.00  | 12.00 | 3.00 |
|  | <b><i>Lathyrus sylvestris</i></b><br>Narrow-leaved Everlasting-pea (Dorset) | 25      | -----    | 520.00 | 56.00  | 12.00 | 3.00 |
|  | <b><i>Legousia hybrida</i></b><br>Venus's Looking-glass (Somerset)          | 10,000  | -----    | -----  | -----  | 50.00 | 6.00 |
|  | <b><i>Leontodon hispidus</i></b><br>Rough Hawkbit (Somerset)                | 900     | 5,700.00 | 620.00 | 67.00  | 10.00 | 3.00 |
|  | <b><i>Lepidium squamatum</i></b><br>Swine-cress (Somerset)                  | -----   | -----    | 400.00 | 43.00  | 10.00 | 3.00 |
|  | <b><i>Lepidium didymum</i></b><br>Lesser Swine-cress (Somerset)             | -----   | -----    | 400.00 | 43.00  | 10.00 | 3.00 |
|  | <b><i>Leucanthemum vulgare</i></b><br>Moon Daisy (Yorkshire)                | 2,000   | 1,660.00 | 180.00 | 20.00  | 10.00 | 3.00 |

|    | <b>Scientific name</b><br>Common name (origin)                                 | Seeds/g | £/10kg   | £/kg    | £/100g  | £/10g   | £/g  |
|---|--|---------|----------|---------|---------|---------|------|
|    | <b><i>Linum bienne</i></b><br>Pale Flax (Dorset)                               | 800     | - - - -  | 320.00  | 35.00   | 10.00   | 3.00 |
|    | <b><i>Linum catharticum</i></b><br>Fairy Flax (Somerset)                       | 10,000  | - - - -  | - - - - | 320.00  | 40.00   | 4.00 |
|    | <b><i>Lipandra polysperma</i></b><br>Many-seeded Goosefoot (Somerset)          | 800     | - - - -  | - - - - | - - - - | - - - - | 3.00 |
|    | <b><i>Lotus corniculatus</i></b><br>Bird's-Foot Trefoil (Notts)                | 800     | 5,890.00 | 640.00  | 70.00   | 10.00   | 3.00 |
|    | <b><i>Lotus pedunculatus</i></b><br>Greater Bird's-Foot Trefoil                | 800     | - - - -  | 680.00  | 73.00   | 10.00   | 3.00 |
|    | <b><i>Lycopus europaeus</i></b><br>Gypsywort (England)                         | 4,000   | - - - -  | 440.00  | 48.00   | 10.00   | 3.00 |
|   | <b><i>Lythrum salicaria</i></b><br>Purple Loose-Strife (Cambridgeshire)        | 20,000  | - - - -  | - - - - | 40.00   | 10.00   | 3.00 |
|  | <b><i>Malva arborea</i></b><br>Tree Mallow (Cornwall)                          | 80      | - - - -  | 340.00  | 37.00   | 10.00   | 3.00 |
|  | <b><i>Malva moschata</i></b><br>Musk-Mallow (Lincolnshire)                     | 500     | 2,950.00 | 320.00  | 35.00   | 10.00   | 3.00 |
|  | <b><i>Matricaria chamomilla</i></b><br>Scented Mayweed (England)               | 10,000  | - - - -  | - - - - | - - - - | - - - - | 3.00 |
|  | <b><i>Medicago lupulina</i></b><br>Black Medick (Norfolk)                      | 400     | 1,100.00 | 120.00  | 20.00   | 10.00   | 3.00 |
|  | <b><i>Mentha aquatic</i></b><br>Water Mint (Cambridgeshire)                    | 5,000   | - - - -  | - - - - | - - - - | - - - - | 5.00 |
|  | <b><i>Myosotis arvensis</i></b><br>Field Forget-me-not (Somerset)              | 2,000   | - - - -  | - - - - | - - - - | 10.00   | 3.00 |
|  | <b><i>Myrrhis odorata</i></b><br>Sweet Cicely (Dumfriesshire)                  | 20      | - - - -  | - - - - | 40.00   | 10.00   | 3.00 |
|  | <b><i>Odontites verna</i></b><br>Red Bartsia (Somerset)                        | 6,000   | - - - -  | 840.00  | 91.00   | 10.00   | 3.00 |
|  | <b><i>Oenanthe pimpinelloides</i></b><br>Corky-fruited Water-dropwort (Dorset) | 450     | - - - -  | 260.00  | 28.00   | 10.00   | 3.00 |
|  | <b><i>Onobrychis viciifolia</i></b><br>Sainfoin (Wiltshire)                    | 50      | - - - -  | 240.00  | 26.00   | 10.00   | 3.00 |
|  | <b><i>Origanum vulgare</i></b><br>Wild Marjoram (Gloucestershire)              | 11,000  | - - - -  | 660.00  | 71.00   | 10.00   | 3.00 |
|  | <b><i>Ornithogalum pyrenaicum</i></b><br>Bath Asparagus (Somerset)             | 125     | - - - -  | - - - - | 52.00   | 10.00   | 3.00 |

|    | <b>Scientific name</b><br>Common name (origin)                   | Seeds/g | £/10kg   | £/kg     | £/100g | £/10g | £/g  |
|---|--|---------|----------|----------|--------|-------|------|
|    | <b>Orobanche elatior</b><br>Knapweed Broomrape (Somerset)        | 100,000 | -----    | -----    | -----  | ----- | 6.00 |
|    | <b>Orobanche minor</b><br>Common Broomrape (Somerset)            | 100,000 | -----    | -----    | -----  | ----- | 6.00 |
|    | <b>Papaver lecoqii</b><br>Yellow-juiced Poppy (Somerset)         | 6,000   | -----    | -----    | -----  | 16.00 | 3.00 |
|    | <b>Papaver rhoeas</b><br>Common Poppy (Lancashire)               | 10,000  | 1,150.00 | 125.00   | 20.00  | 10.00 | 3.00 |
|    | <b>Pastinaca sativa</b><br>Wild Parsnip (Norfolk)                | 230     | -----    | 280.00   | 30.00  | 10.00 | 3.00 |
|    | <b>Pimpinella major</b><br>Greater Burnet-saxifrage (Derbyshire) | 500     | -----    | -----    | -----  | 10.00 | 3.00 |
|   | <b>Plantago lanceolata</b><br>Ribwort Plantain (Wiltshire)       | 300     | 1,330.00 | 145.00   | 20.00  | 10.00 | 3.00 |
|  | <b>Plantago media</b><br>Hoary Plantain (Somerset)               | 2,000   | 2,300.00 | 250.00   | 27.00  | 10.00 | 3.00 |
|  | <b>Polemonium caeruleum</b><br>Jacob's Ladder (England)          | -----   | -----    | -----    | 48.00  | 10.00 | 3.00 |
|  | <b>Poterium sanguisorba</b><br>Salad Burnet (Yorkshire)          | 250     | 1,380.00 | 150.00   | 20.00  | 10.00 | 3.00 |
|  | <b>Primula elatior</b><br>Oxlip (Cambridgeshire)                 | 1,100   | -----    | -----    | -----  | 18.00 | 3.00 |
|  | <b>Primula veris</b><br>Cowslip (Lincolnshire)                   | 900     | 3,860.00 | 420.00   | 45.00  | 10.00 | 3.00 |
|  | <b>Primula vulgaris</b><br>Primrose (Somerset)                   | 1,300   | -----    | 5,500.00 | 600.00 | 70.00 | 8.00 |
|  | <b>Prunella vulgaris</b><br>Selfheal (Yorkshire)                 | 1,200   | 2,210.00 | 240.00   | 26.00  | 10.00 | 3.00 |
|  | <b>Ranunculus acris</b><br>Meadow Buttercup (Suffolk)            | 600     | 1,610.00 | 175.00   | 20.00  | 10.00 | 3.00 |
|  | <b>Ranunculus arvensis</b><br>Corn Buttercup (Oxfordshire)       | 180     | -----    | 340.00   | 37.00  | 10.00 | 3.00 |
|  | <b>Ranunculus bulbosus</b><br>Bulbous Buttercup (Somerset)       | 350     | -----    | 320.00   | 35.00  | 10.00 | 3.00 |
|  | <b>Reseda lutea</b><br>Wild Mignonette (Somerset)                | 2,000   | -----    | 380.00   | 41.00  | 10.00 | 3.00 |
|  | <b>Reseda luteola</b><br>Weld (Oxfordshire)                      | 4,500   | -----    | 300.00   | 32.00  | 10.00 | 3.00 |

|    | <b>Scientific name</b><br>Common name (origin)                        | Seeds/g | £/10kg   | £/kg   | £/100g | £/10g | £/g  |
|--|---|---------|----------|--------|--------|-------|------|
|    | <b><i>Rhinanthus minor</i></b><br>Yellow Rattle (Wiltshire, Somerset) | 300     | 2,940.00 | 320.00 | 35.00  | 10.00 | 3.00 |
|    | <b><i>Rumex acetosa</i></b><br>Common Sorrel (Leicestershire)         | 1,400   | 3,040.00 | 330.00 | 36.00  | 10.00 | 3.00 |
|    | <b><i>Rumex acetosella</i></b><br>Sheep's Sorrel (Suffolk)            | 1,500   | -----    | 350.00 | 38.00  | 10.00 | 3.00 |
|    | <b><i>Rumex obtusifolius</i></b><br>Broad-leaved Dock (Somerset)      | 1,000   | -----    | -----  | 20.00  | 10.00 | 3.00 |
|    | <b><i>Rumex sanguineus</i></b><br>Wood Dock (Somerset)                | 1,500   | -----    | -----  | 20.00  | 10.00 | 3.00 |
|    | <b><i>Sanguisorba officinalis</i></b><br>Great Burnet (Oxfordshire)   | 600     | -----    | 600.00 | 65.00  | 10.00 | 3.00 |
|   | <b><i>Saponaria officinalis</i></b><br>Soapwort (Norfolk)             | 500     | -----    | 480.00 | 52.00  | 10.00 | 3.00 |
|  | <b><i>Scabiosa columbaria</i></b><br>Small Scabious (Hertfordshire)   | 800     | -----    | 650.00 | 70.00  | 12.00 | 3.00 |
|  | <b><i>Scrophularia auriculata</i></b><br>Water Figwort (Somerset)     | 12,000  | -----    | -----  | -----  | ----- | 3.00 |
|  | <b><i>Senecio vulgaris</i></b><br>Groundsel (Somerset)                | 10,000  | -----    | -----  | -----  | 12.00 | 3.00 |
|  | <b><i>Sherardia arvensis</i></b><br>Field Madder (Somerset)           | 2,000   | -----    | -----  | -----  | ----- | 5.00 |
|  | <b><i>Silaum silaus</i></b><br>Pepper-saxifrage (Yorkshire)           | 400     | -----    | 375.00 | 40.00  | 10.00 | 3.00 |
|  | <b><i>Silene dioica</i></b><br>Red Campion (Shropshire)               | 1,000   | 1,470.00 | 160.00 | 20.00  | 10.00 | 3.00 |
|  | <b><i>Silene flos-cuculi</i></b><br>Ragged Robin (Cambridgeshire)     | 5,000   | 4,780.00 | 520.00 | 56.00  | 10.00 | 3.00 |
|  | <b><i>Silene latifolia</i></b><br>White Campion (Somerset)            | 800     | 1,660.00 | 180.00 | 20.00  | 10.00 | 3.00 |
|  | <b><i>Silene noctiflora</i></b><br>Night-flowering Catchfly (England) | 1,200   | 830.00   | 90.00  | 20.00  | 10.00 | 3.00 |
|  | <b><i>Silene uniflora</i></b><br>Sea Campion (Pembrokeshire)          | 1,500   | -----    | -----  | -----  | ----- | 6.00 |
|  | <b><i>Silene vulgaris</i></b><br>Bladder Campion (Hertfordshire)      | 1,200   | 1,660.00 | 180.00 | 20.00  | 10.00 | 3.00 |

|    | <b>Scientific name</b><br>Common name (origin)                 | Seeds/g | £/10kg   | £/kg   | £/100g | £/10g | £/g  |
|--|--|---------|----------|--------|--------|-------|------|
|    | <b>Sisymbrium officinale</b><br>Hedge Mustard (Somerset)       | 5,000   | -----    | -----  | 36.00  | 10.00 | 3.00 |
|    | <b>Spergula arvensis</b><br>Corn Spurrey (Buckinghamshire)     | 3,000   | -----    | -----  | -----  | 10.00 | 3.00 |
|    | <b>Succisa pratensis</b><br>Devil's-bit Scabious (Oxfordshire) | 650     | -----    | 650.00 | 70.00  | 12.00 | 3.00 |
|    | <b>Tamus communis</b><br>Black Bryony (Berkshire)              | 100     | -----    | -----  | -----  | 10.00 | 3.00 |
|    | <b>Taraxacum officinale</b><br>Dandelion (Somerset)            | 1,300   | 3,130.00 | 340.00 | 37.00  | 10.00 | 3.00 |
|    | <b>Teucrium scorodonia</b><br>Wood Sage (Norfolk)              | 1,400   | -----    | 880.00 | 95.00  | 10.00 | 3.00 |
|   | <b>Thalictrum flavum</b><br>Common Meadow-rue (Cambridgeshire) | 600     | -----    | -----  | -----  | 10.00 | 3.00 |
|  | <b>Torilis japonica</b><br>Upright Hedge-parsley (Suffolk)     | 600     | -----    | 380.00 | 41.00  | 10.00 | 3.00 |
|  | <b>Tragopogon pratensis</b><br>Goat's Beard (Somerset)         | 60      | -----    | 440.00 | 48.00  | 12.00 | 3.00 |
|  | <b>Trifolium dubium</b><br>Lesser trefoil (Somerset)           | -----   | -----    | -----  | 26.00  | 10.00 | 3.00 |
|  | <b>Umbilicus rupestris</b><br>Navelwort (Glamorgan)            | 50,000  | -----    | -----  | -----  | ----- | 6.00 |
|  | <b>Verbascum nigrum</b><br>Dark Mullein (Cumbria)              | 10,000  | -----    | -----  | 36.00  | 10.00 | 3.00 |
|  | <b>Verbascum thapsus</b><br>Great Mullein (Suffolk)            | 12,000  | -----    | 240.00 | 26.00  | 10.00 | 3.00 |
|  | <b>Veronica arvensis</b><br>Wall Speedwell (Somerset)          | 10,000  | -----    | -----  | -----  | 10.00 | 3.00 |
|  | <b>Veronica persica</b><br>Common Field-speedwell (Somerset)   | 3,000   | -----    | 270.00 | 29.00  | 10.00 | 3.00 |
|  | <b>Vicia cracca</b><br>Tufted Vetch (Cambridgeshire)           | 40      | 5340.00  | 580.00 | 63.00  | 10.00 | 3.00 |
|  | <b>Vicia bithynica</b><br>Bithynian Vetch (Somerset)           | 60      | -----    | -----  | -----  | 12.00 | 3.00 |
|  | <b>Vicia sativa</b><br>Common Vetch (Gloucestershire)          | 50      | -----    | 260.00 | 28.00  | 10.00 | 3.00 |
|  | <b>Viola riviniana</b><br>Common Dog-violet (England)          | -----   | -----    | -----  | -----  | 14.00 | 3.00 |

| <b>Scientific name</b><br>Common Name (origin)                        | <b>Seeds/g</b> | <b>£/10kg</b> | <b>£/kg</b> | <b>£/100g</b> | <b>£/10g</b> | <b>£/g</b> |
|---|----------------|---------------|-------------|---------------|--------------|------------|
| <b><i>Agrostis capillaris</i></b><br>Common Bent (Caernarvonshire)    | 15,000         | - - - -       | 180.00      | 20.00         | 8.00         | 3.00       |
| <b><i>Agrostis vinealis</i></b><br>Brown Bent (Derbyshire)            | 15,000         | 1,660.00      | 180.00      | 20.00         | 8.00         | 3.00       |
| <b><i>Alopecurus geniculatus</i></b><br>Marsh Foxtail (Norfolk)       | 1,000          | - - - -       | 180.00      | 20.00         | 8.00         | 3.00       |
| <b><i>Alopecurus pratensis</i></b><br>Meadow Foxtail (Northumberland) | 1,000          | - - - -       | 180.00      | 20.00         | 8.00         | 3.00       |
| <b><i>Anthoxanthum odoratum</i></b><br>Sweet Vernal-Grass (Wiltshire) | 1,500          | 2,390.00      | 260.00      | 28.00         | 8.00         | 3.00       |
| <b><i>Arrhenatherum elatius</i></b><br>False Oat-Grass (Norfolk)      | 300            | - - - -       | - - - -     | 32.00         | 8.00         | 3.00       |
| <b><i>Avena fatua</i></b><br>Wild Oat (Somerset)                      | 150            | - - - -       | - - - -     | 26.00         | 8.00         | 3.00       |
| <b><i>Avenella flexuosa</i></b><br>Wavy Hair-grass                    | 3,000          | - - - -       | - - - -     | - - - -       | 8.00         | 5.00       |
| <b><i>Avenula pubescens</i></b><br>Downy Oat-Grass (Yorkshire)        | 320            | - - - -       | - - - -     | 36.00         | 8.00         | 3.00       |
| <b><i>Brachypodium sylvaticum</i></b><br>False Brome (Hertfordshire)  | 400            | 1,840.00      | 200.00      | 22.00         | 8.00         | 3.00       |
| <b><i>Briza media</i></b><br>Quaking Grass (Cambridgeshire)           | 2,500          | 1,660.00      | 180.00      | 20.00         | 8.00         | 3.00       |
| <b><i>Bromopsis erecta</i></b><br>Upright Brome (Somerset)            | 200            | 920.00        | 100.00      | 20.00         | 8.00         | 3.00       |
| <b><i>Bromus hordeaceus</i></b><br>Soft Brome (Somerset)              | 200            | - - - -       | 100.00      | 20.00         | 8.00         | 3.00       |
| <b><i>Carex divulsa</i></b><br>Grey Sedge (Somerset)                  | 800            | 1,840.00      | 180.00      | 20.00         | 8.00         | 3.00       |
| <b><i>Carex echinata</i></b><br>Star Sedge (Somerset)                 | 600            | 2,020.00      | 220.00      | 24.00         | 8.00         | 3.00       |
| <b><i>Carex flacca</i></b><br>Glaucous Sedge (Somerset)               | 800            | 2,300.00      | 280.00      | 30.00         | 8.00         | 3.00       |
| <b><i>Carex sylvatica</i></b><br>Wood Sedge (Somerset)                | 800            | - - - -       | - - - -     | 80.00         | 10.00        | 3.00       |
| <b><i>Cynosurus cristatus</i></b><br>Crested Dog's-tail (Yorkshire)   | 1,000          | - - - -       | 120.00      | 20.00         | 8.00         | 3.00       |



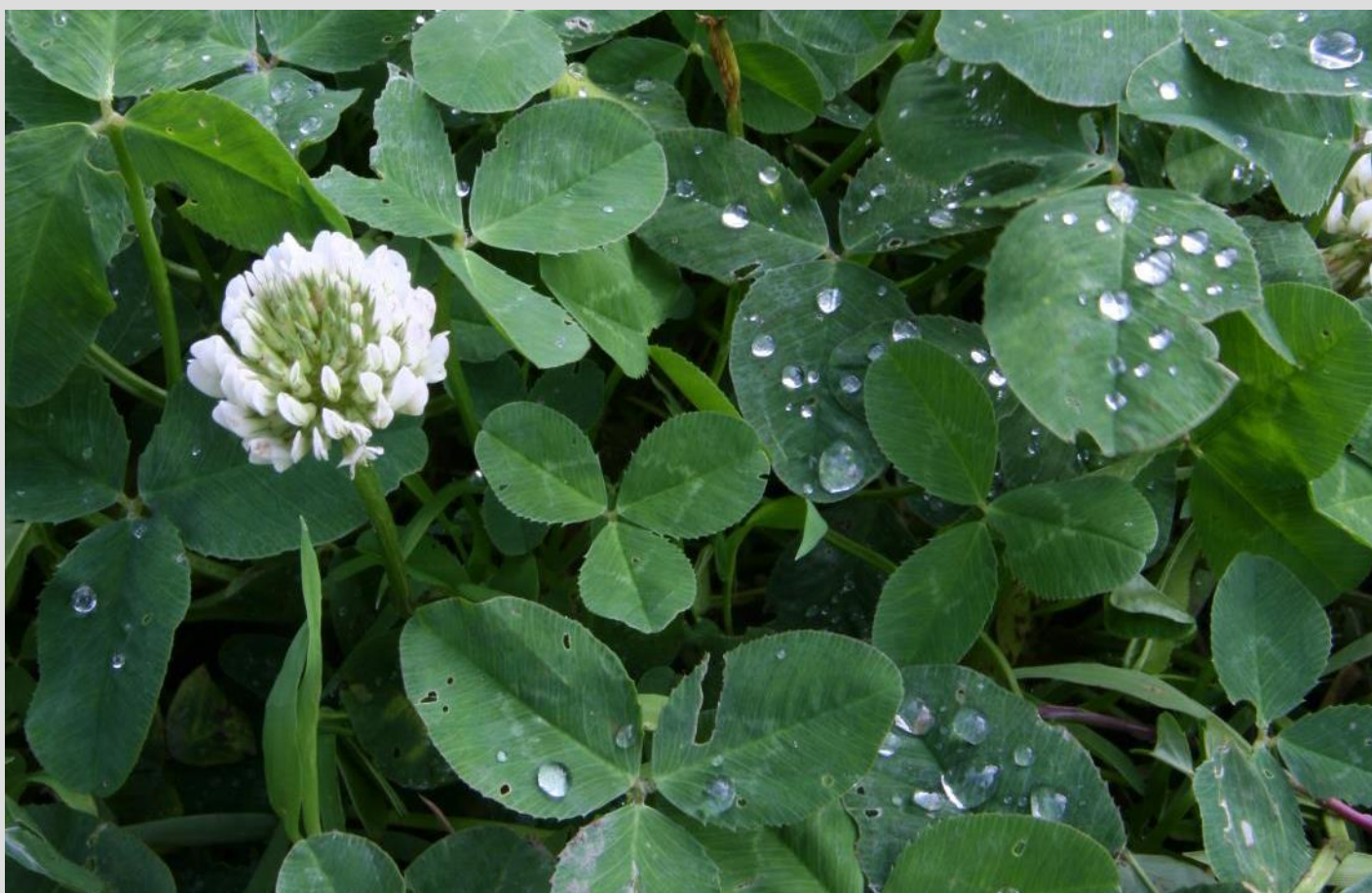
| <b>Scientific name</b><br>Common Name (origin)                         | <b>Seeds/g</b> | <b>£/10kg</b> | <b>£/kg</b> | <b>£/100g</b> | <b>£/10g</b> | <b>£/g</b> |
|--|----------------|---------------|-------------|---------------|--------------|------------|
| <b><i>Dactylis glomerata</i></b><br>Cocksfoot                          | 800            | 460.00        | 50.00       | 20.00         | 8.00         | 3.00       |
| <b><i>Deschampsia cespitosa</i></b><br>Tufted Hair-grass (Oxfordshire) | 4,000          | 1,840.00      | 180.00      | 20.00         | 8.00         | 3.00       |
| <b><i>Festuca ovina</i></b><br>Sheep's Fescue (Yorkshire)              | 1,200          | 552.00        | 60.00       | 20.00         | 8.00         | 3.00       |
| <b><i>Festuca rubra</i></b><br>Red Fescue (England)                    | 1,000          | -----         | 50.00       | 20.00         | 8.00         | 3.00       |
| <b><i>Festuca rubra ssp litoralis</i></b><br>Red Fescue (Cumbria)      | 1,000          | 460.00        | 50.00       | 20.00         | 8.00         | 3.00       |
| <b><i>Hordeum secalinum</i></b><br>Meadow Barley (England)             | 1,000          | -----         | 280.00      | 30.00         | 8.00         | 3.00       |
| <b><i>Juncus bufonius</i></b><br>Toad Rush (Somerset)                  | 10,000         | -----         | 420.00      | 45.00         | 8.00         | 3.00       |
| <b><i>Koeleria macrantha</i></b><br>Crested Hair-Grass (Yorkshire)     | 3,000          | -----         | 320.00      | 35.00         | 8.00         | 3.00       |
| <b><i>Lolium perenne</i></b><br>Perennial Ryegrass (Kent)              | 500            | 276.00        | 30.00       | 20.00         | 8.00         | 3.00       |
| <b><i>Phleum bertolonii</i></b><br>Small Cat's Tail (Derbyshire)       | 4,000          | 920.00        | 100.00      | 20.00         | 8.00         | 3.00       |
| <b><i>Schedonorus arundinaceus</i></b><br>Tall Fescue (Kent)           | 400            | 276.00        | 30.00       | 20.00         | 8.00         | 3.00       |
| <b><i>Trisetum flavescens</i></b><br>Yellow Oat-Grass (Leicestershire) | 2,500          | 3,220.00      | 350.00      | 39.00         | 8.00         | 3.00       |
| <b><i>Typha latifolia</i></b><br>Bullrush (Gower)                      | -----          | -----         | 440.00      | 48.00         | 8.00         | 3.00       |



Amenity and agricultural cultivars may sometimes be similar to the wild form of the same species, for example, Crested Dog's-tail and Small-leaved White-clover. However, the majority of cultivars have been bred for genetic uniformity and robustness, and are usually larger and more vigorous, when compared to the wild type, and often show poor long-term persistence. Because they are genetically uniform they do not possess the genetic diversity needed to respond to different and changing wild environments.

| <b>Scientific name</b><br>Common name                               | <b>Seeds/g</b> | <b>£/10kg</b> | <b>£/kg</b> | <b>£/100g</b> | <b>£/10g</b> | <b>£/g</b> |
|---|----------------|---------------|-------------|---------------|--------------|------------|
| <b><i>Achillea millefolium</i></b><br>Yarrow                        | 10,000         | 645.00        | 70.00       | 12.00         | 8.00         | 3.00       |
| <b><i>Agrostis capillaris</i></b><br>Common Bent                    | 15,000         | 331.00        | 36.00       | 12.00         | 8.00         | 3.00       |
| <b><i>Agrostis stolonifera</i></b><br>Creeping Bent                 | 15,000         | - - - -       | 24.00       | 12.00         | 8.00         | 3.00       |
| <b><i>Alopecurus pratensis</i></b><br>Meadow Foxtail                | 1,000          | - - - -       | 100.00      | 12.00         | 8.00         | 3.00       |
| <b><i>Cynosurus cristatus</i></b><br>Crested Dog's-tail             | 1,600          | 230.00        | 25.00       | 12.00         | 8.00         | 3.00       |
| <b><i>Dactylis glomerata</i></b><br>Cocksfoot                       | 1,000          | 203.00        | 22.00       | 12.00         | 8.00         | 3.00       |
| <b><i>Festuca ovina</i></b><br>Sheep's Fescue                       | 1,200          | 221.00        | 24.00       | 12.00         | 8.00         | 3.00       |
| <b><i>Festuca rubra</i></b><br>Slender-creeping Red-fescue          | 1,000          | 203.00        | 22.00       | 12.00         | 8.00         | 3.00       |
| <b><i>Festuca rubra ssp commutata</i></b><br>Chewing's Fescue       | 1,000          | 203.00        | 22.00       | 12.00         | 8.00         | 3.00       |
| <b><i>Festuca rubra ssp rubra</i></b><br>Strong-creeping Red-fescue | 1,000          | 203.00        | 22.00       | 12.00         | 8.00         | 3.00       |
| <b><i>Holcus lanatus</i></b><br>Yorkshire Fog                       | 2,500          | - - - -       | 50.00       | 12.00         | 8.00         | 3.00       |
| <b><i>Lolium multiflorum</i></b><br>Westerwolds Ryegrass            | 400            | 184.00        | 20.00       | 12.00         | 8.00         | 3.00       |
| <b><i>Lolium perenne</i></b><br>Perennial Ryegrass                  | 500            | 184.00        | 20.00       | 12.00         | 8.00         | 3.00       |
| <b><i>Lotus corniculatus</i></b><br>Bird's-foot Trefoil             | 800            | 424.00        | 46.00       | 12.00         | 8.00         | 3.00       |
| <b><i>Onobrychis viciifolia</i></b><br>Sainfoin                     | 40             | 276.00        | 30.00       | 12.00         | 8.00         | 3.00       |

|   |         |         |       |       |      |      |
|---|---------|---------|-------|-------|------|------|
| <b><i>Phleum bertolonii</i></b><br>Smaller Cat's-tail       | 4,000   | 258.00  | 28.00 | 12.00 | 8.00 | 3.00 |
| <b><i>Plantago lanceolata</i></b><br>Ribwort Plantain       | 300     | - - - - | 40.00 | 12.00 | 8.00 | 3.00 |
| <b><i>Poa nemoralis</i></b><br>Wood Meadow-grass            | 4,000   | 258.00  | 28.00 | 12.00 | 8.00 | 3.00 |
| <b><i>Poa pratensis</i></b><br>Smooth-stalked Meadow-grass  | 3,000   | 203.00  | 22.00 | 12.00 | 8.00 | 3.00 |
| <b><i>Poa trivialis</i></b><br>Rough-stalked Meadow-grass   | 4,000   | 221.00  | 24.00 | 12.00 | 8.00 | 3.00 |
| <b><i>Schedonorus pratensis</i></b><br>Meadow Fescue        | 500     | 203.00  | 22.00 | 12.00 | 8.00 | 3.00 |
| <b><i>Trifolium hybridum</i></b><br>Alsike Clover           | - - - - | 313.00  | 34.00 | 12.00 | 8.00 | 3.00 |
| <b><i>Trifolium pratense</i></b><br>Red Clover              | 500     | 203.00  | 22.00 | 12.00 | 8.00 | 3.00 |
| <b><i>Trifolium repens</i></b><br>Small-leaved White-clover | 1,400   | 221.00  | 24.00 | 12.00 | 8.00 | 3.00 |





Marmalade hoverfly on *Sanguisorba officinalis* - Great Burnet

Donald MacIntyre, Jane Lipington, Mischa MacIntyre, Marsha MacIntyre, Laurie MacIntyre, Myrica MacIntyre, Daniel Campbell, Marc Bullock, Albert Hughes, Carl Cockle, Mark Schofield, Marion Robinson, Karen Claxton, Sue Potter, Amanda Evenett, Siona Smith, and Nicole Scott.